

Schüco ASS 70 FD: Dış mekanlara yönelik katlanır sürme kapılar

Tamamı cam duvarlar ısı yalıtımlı Schüco ASS 70 FD katlanır sürme kapı ile hemen hemen sonuna kadar açılabilir. Kapı kanat dizisi çok az güç kullanılarak kolayca içeri veya dışarı doğru katlanır ve sağa ve/veya sola sürülür. Kapı kanatları yüksek kaliteli makaralı taşıyıcılar üzerinde hemen hemen hiç ses çıkarmadan kaydırılır ve tepe veya alt noktada güvenli bir şekilde yönlendirilir.



Temel yararlar:

- Sağlam ısı yalıtımlı alüminyum profiller
- Tek el (kilitlenebilir) kollar ile kolayca çalıştırılır
- Dayanıklı yüzey işlemleri
- Daha yüksek bir ses yalıtımı seviyesi seçilebilir
- Profil iç ve dış yüzeyinde farklı renkler (renkli boyanmış veya anotlanmış yüzey)
- Çeşitli cam çözümlerinin kullanımı
- Balkon camı olarak da kullanılabilir

Tek tek üniteler hızlı, kompakt bir şekilde küçük bir alan kaplayacak şekilde basitçe katlanır ve yanlara itilir. Bu da iç mekan ve dış mekan arasında ideal bir bağlantı oluşturur. Schüco ASS 70 FD kolayca diğer Schüco sistemleri ile birleştirilebilir.

Tech. Information

Material

Aluminium

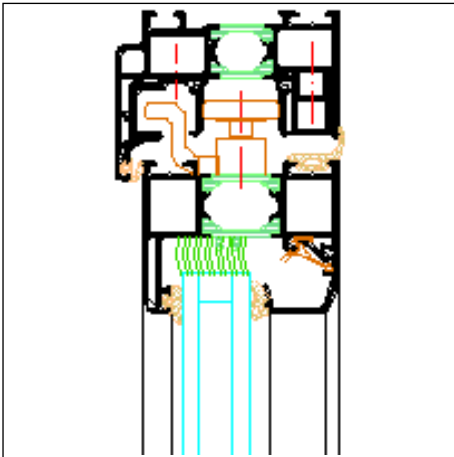
Type of construction

Thermally insulated

Folding sliding windows and doors

CAD-Drawings

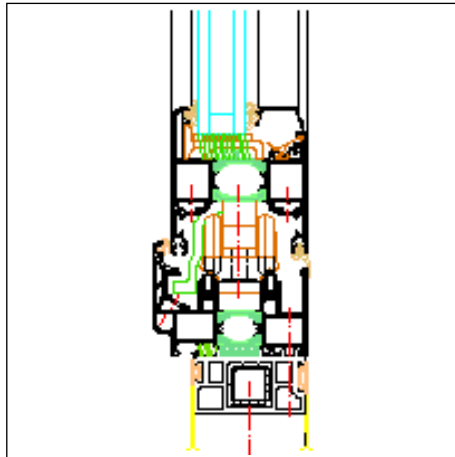
Inward-opening (vertical, WK 2)



Top section detail (9.1)

Drawing dxf (dxf/558 KB)

Drawing dwg (dwg/299 KB)

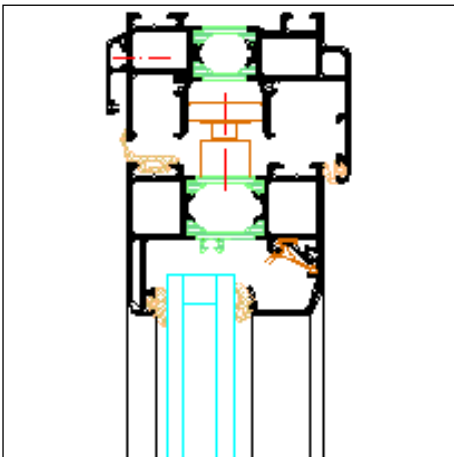


Bottom section detail (10.1)

Drawing dxf (dxf/566 KB)

Drawing dwg (dwg/280 KB)

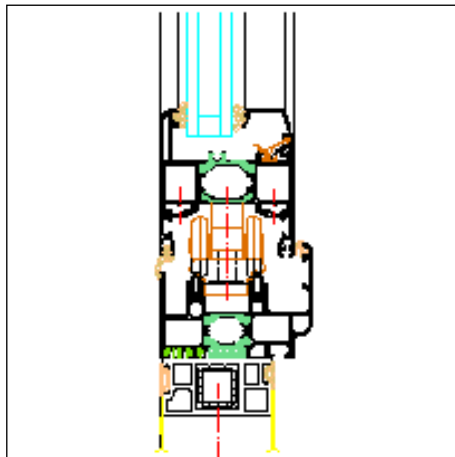
Outward-opening (vertical)



Top section detail (9)

Drawing dxf (dxf/386 KB)

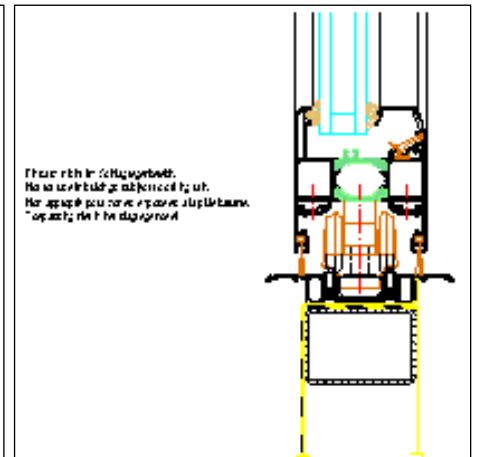
Drawing dwg (dwg/215 KB)



Bottom section detail (10.1)

Drawing dxf (dxf/600 KB)

Drawing dwg (dwg/303 KB)

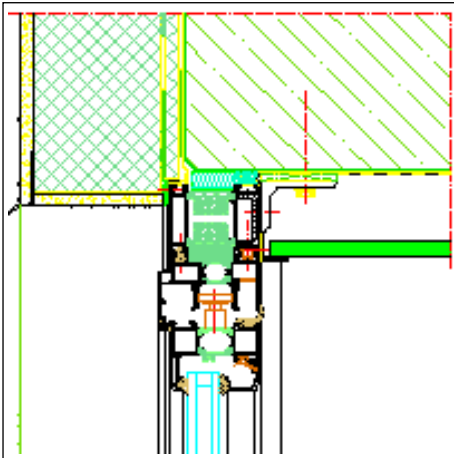


With flush threshold profile. Not for use in buildings subject to driving rain !

Drawing dxf (dxf/440 KB)

Drawing dwg (dwg/249 KB)

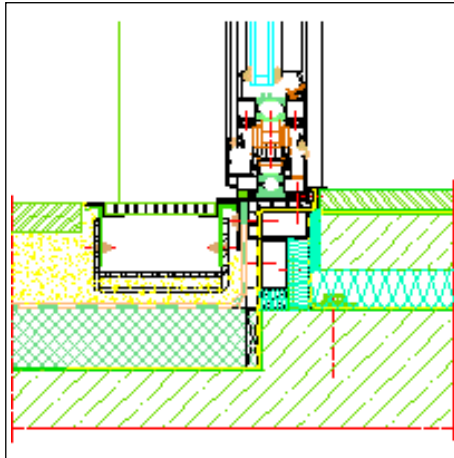
Example 1, vertical



Inward-opening (vertical) Top section detail (9.1)

Drawing dxf (dxf/739 KB)

Drawing dwg (dwg/347 KB)

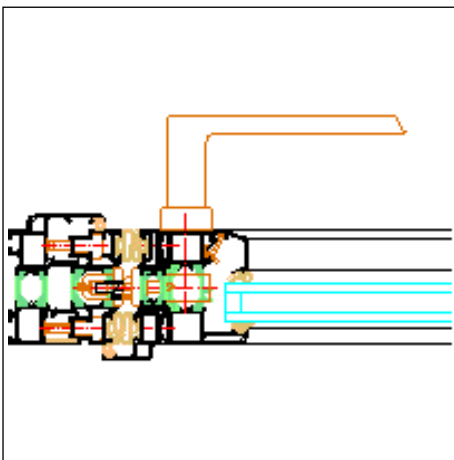


Inward-opening (vertical) Bottom section detail (10.1)

Drawing dxf (dxf/712 KB)

Drawing dwg (dwg/333 KB)

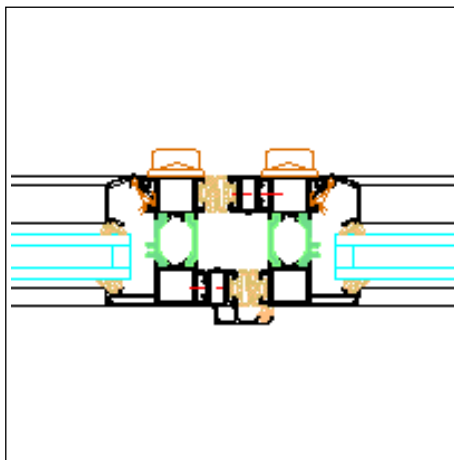
Outward-opening, flush threshold profile



Type 1, outward-opening, section detail 5.2

Drawing dxf (dxf/491 KB)

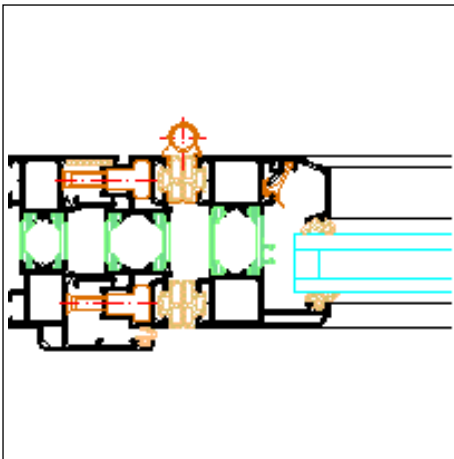
Drawing dwg (dwg/161 KB)



Type 6, outward-opening, section detail 6.2

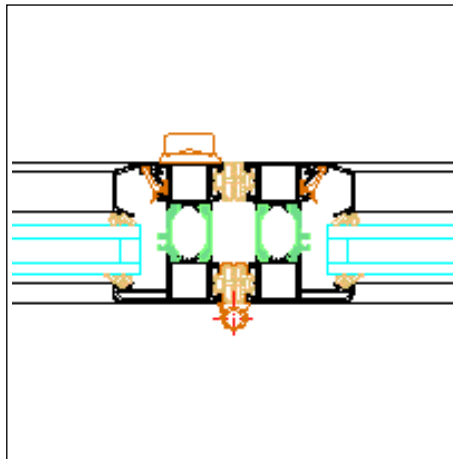
Drawing dxf (dxf/348 KB)

Drawing dwg (dwg/204 KB)



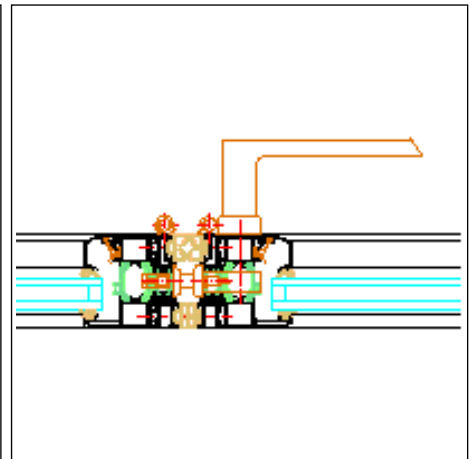
Type 3, inward-opening, section detail 1

Drawing dxf (dxf/502 KB)
Drawing dwg (dwg/259 KB)



Type 3, inward-opening, section detail 2

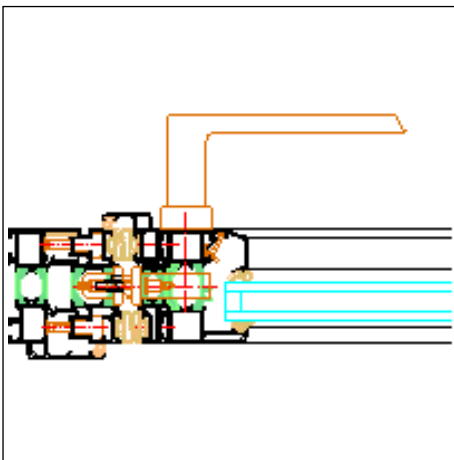
Drawing dxf (dxf/266 KB)
Drawing dwg (dwg/98 KB)



Type 4, inward-opening, section detail 8

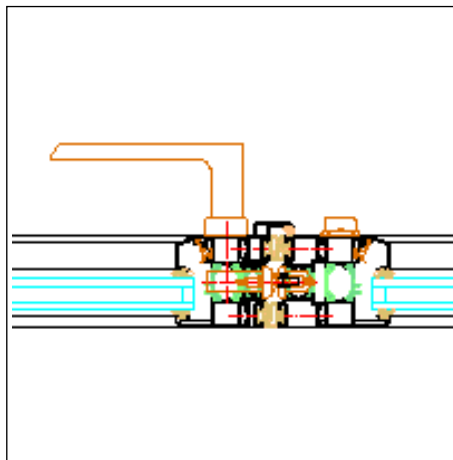
Drawing dxf (dxf/492 KB)
Drawing dwg (dwg/255 KB)

Inward-opening, flush threshold profile



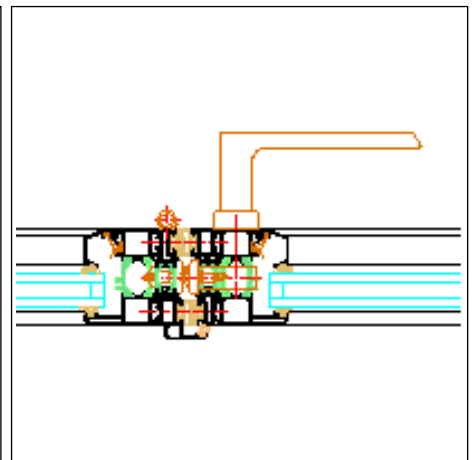
Type 1, inward-opening, section detail 5.2

Drawing dxf (dxf/544 KB)
Drawing dwg (dwg/187 KB)



Type 6, inward-opening, section detail 6.4

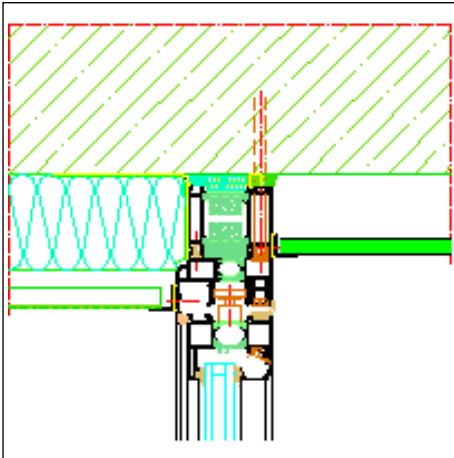
Drawing dxf (dxf/414 KB)
Drawing dwg (dwg/140 KB)



Type 2, (5) inward-opening, section detail 7.2

Drawing dxf (dxf/373 KB)
Drawing dwg (dwg/129 KB)

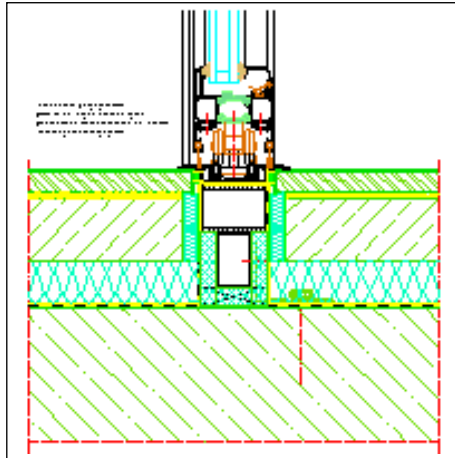
Example 2, vertical



Inward-opening (vertical) Top section detail (9.1)

Drawing dxf (dxf/763 KB)

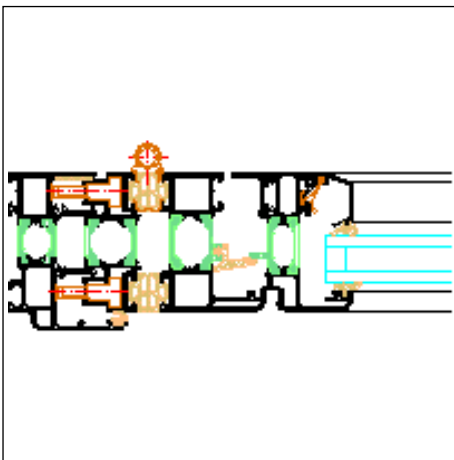
Drawing dwg (dwg/393 KB)



With flush threshold profile. Not for use in buildings subject to driving rain !

Drawing dxf (dxf/653 KB)

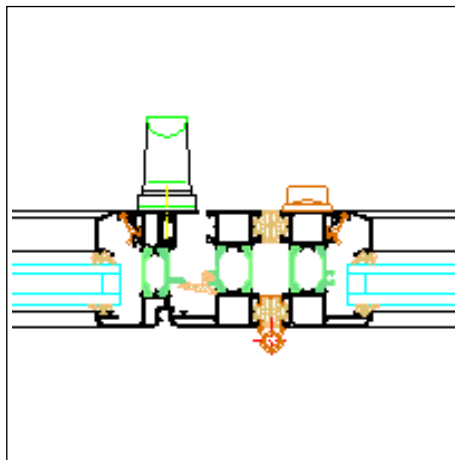
Drawing dwg (dwg/357 KB)



Type 3.1 inward-opening, section detail 1.3

Drawing dxf (dxf/743 KB)

Drawing dwg (dwg/328 KB)

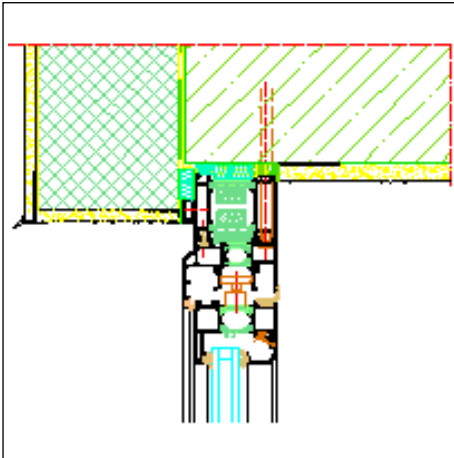


Type 3.1 inward-opening, section detail 2.3

Drawing dxf (dxf/407 KB)

Drawing dwg (dwg/149 KB)

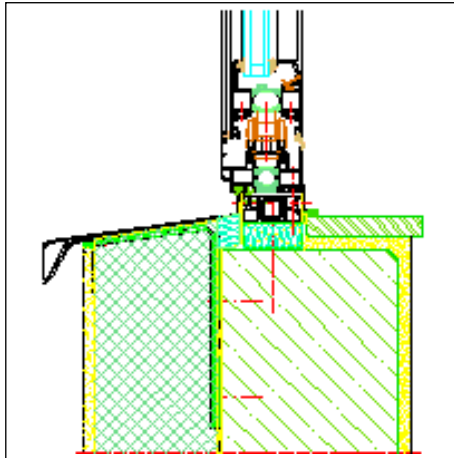
Balcony glazing design (V)



Top section detail (9.1)

Drawing dxf (dxf/5.4 MB)

Drawing dwg (dwg/2.3 MB)

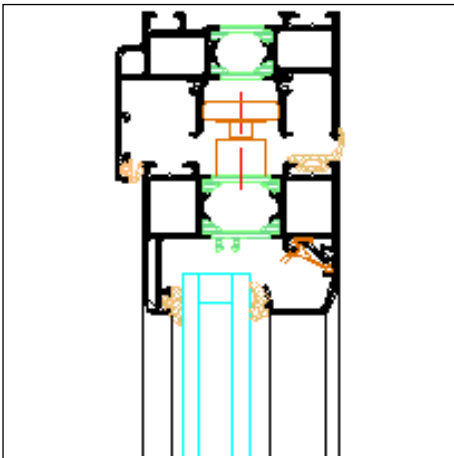


Bottom section detail (10.1)

Drawing dxf (dxf/5.4 MB)

Drawing dwg (dwg/2.3 MB)

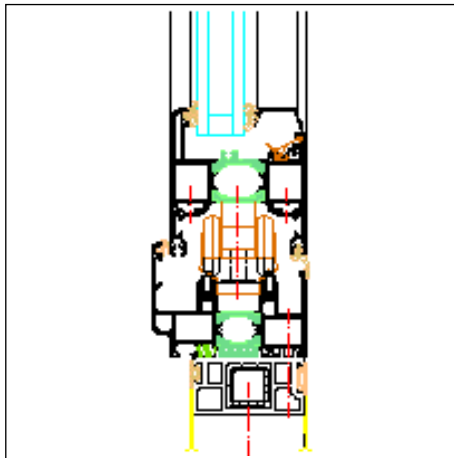
Inward-opening (vertical)



Top section detail (9.1)

Drawing dxf (dxf/430 KB)

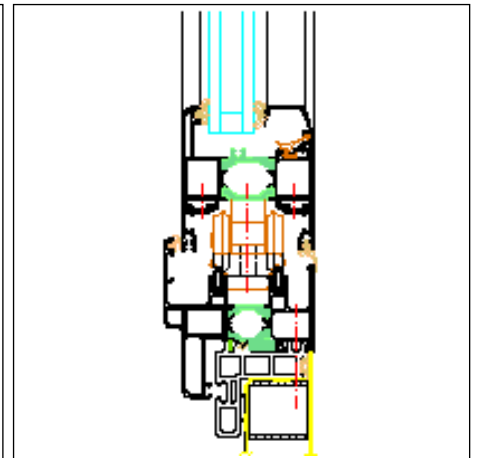
Drawing dwg (dwg/242 KB)



Bottom section detail (10.1)

Drawing dxf (dxf/643 KB)

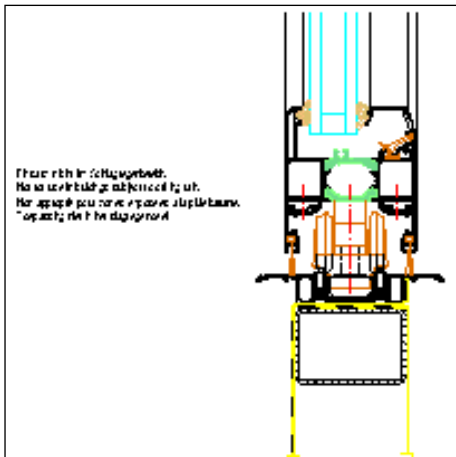
Drawing dwg (dwg/325 KB)



**Bottom section detail (10.1) facing
frame, alternative**

Drawing dxf (dxf/660 KB)

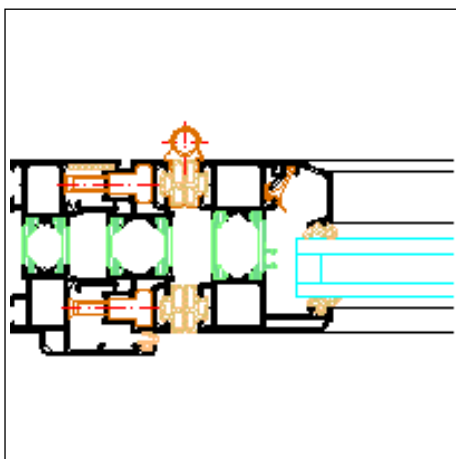
Drawing dwg (dwg/330 KB)



With flush threshold profile. Not for use in buildings subject to driving rain !

Drawing dxf (dxf/541 KB)

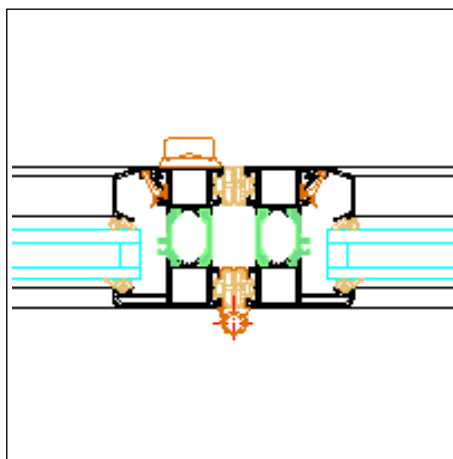
Drawing dwg (dwg/298 KB)



Type 3, inward-opening, section detail 1

Drawing dxf (dxf/502 KB)

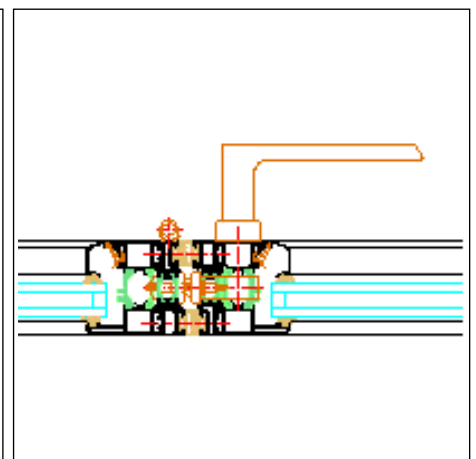
Drawing dwg (dwg/259 KB)



Type 3, inward-opening, section detail 2

Drawing dxf (dxf/266 KB)

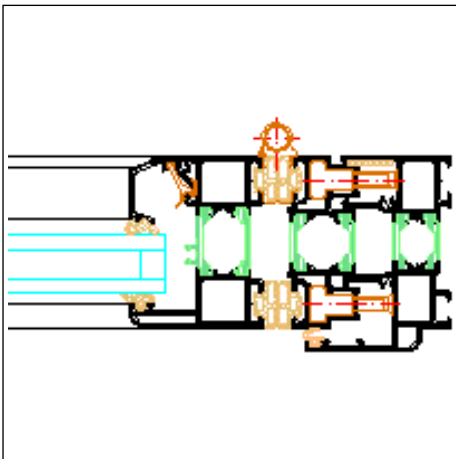
Drawing dwg (dwg/98 KB)



Type 2, inward-opening, section detail 7_1

Drawing dxf (dxf/336 KB)

Drawing dwg (dwg/117 KB)

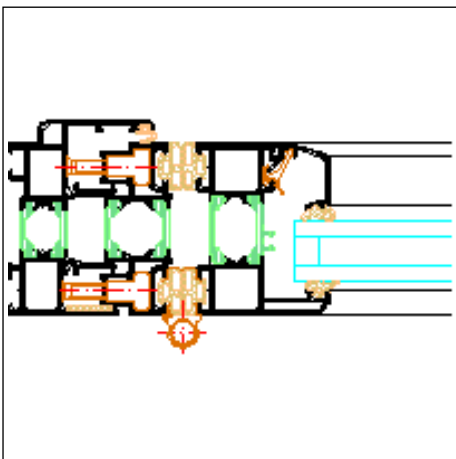


Type 1, inward-opening, section detail

1y

Drawing dxf (dxf/452 KB)

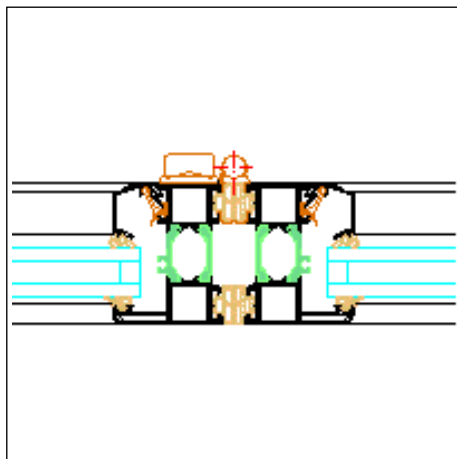
Drawing dwg (dwg/234 KB)



Type 3, outward-opening, section detail 1

Drawing dxf (dxf/389 KB)

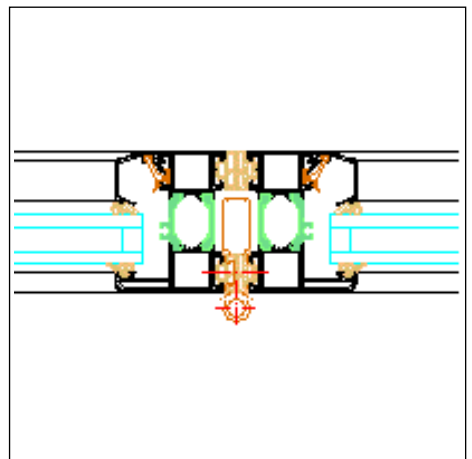
Drawing dwg (dwg/132 KB)



Type 3, outward-opening, section detail 2

Drawing dxf (dxf/266 KB)

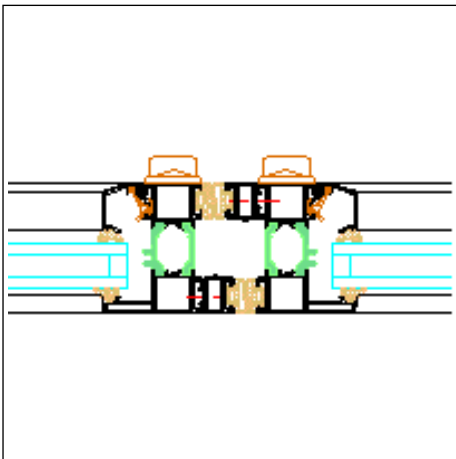
Drawing dwg (dwg/99 KB)



Type 3, outward-opening, section detail 3

Drawing dxf (dxf/247 KB)

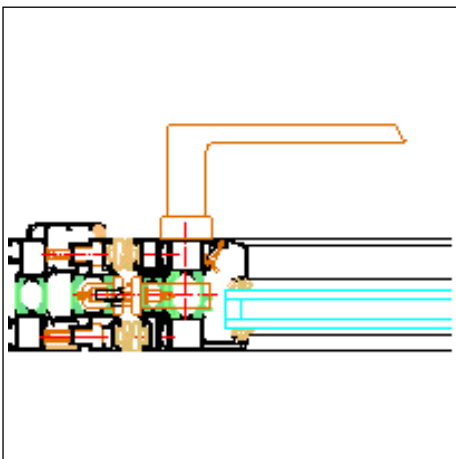
Drawing dwg (dwg/93 KB)



Type 6, outward-opening, section detail 6.1

Drawing dxf (dxf/311 KB)

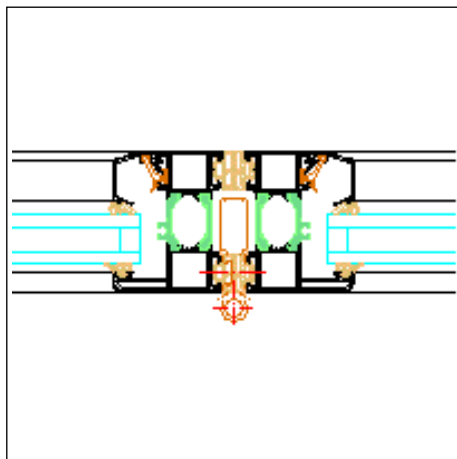
Drawing dwg (dwg/194 KB)



Type 1, outward-opening, section detail 5.1

Drawing dxf (dxf/523 KB)

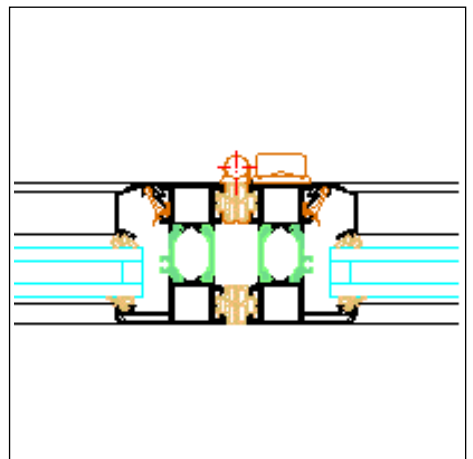
Drawing dwg (dwg/180 KB)



Type 3, outward-opening, section detail 3

Drawing dxf (dxf/247 KB)

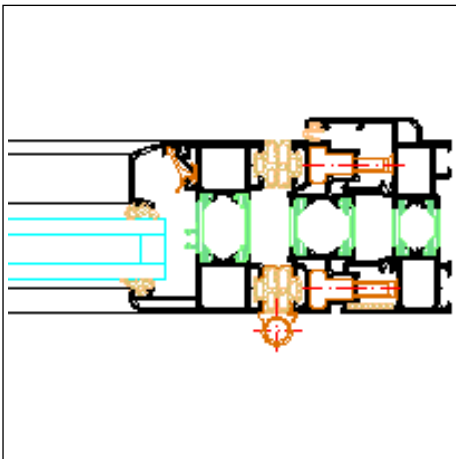
Drawing dwg (dwg/93 KB)



Type 1, outward-opening, section detail 2

Drawing dxf (dxf/266 KB)

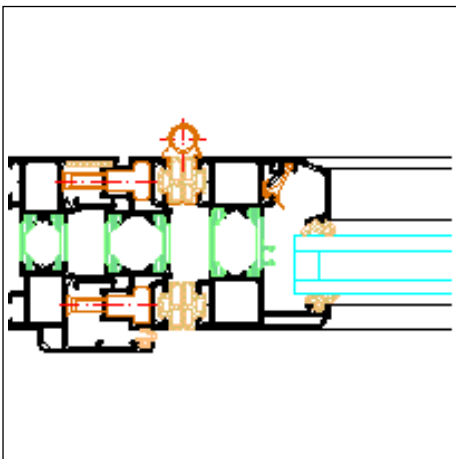
Drawing dwg (dwg/99 KB)



Type 6, outward-opening

Drawing dxf (dxf/452 KB)

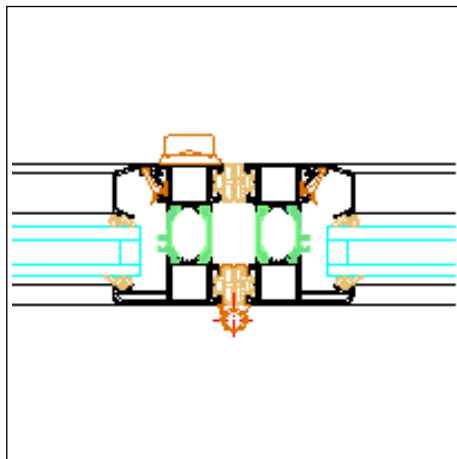
Drawing dwg (dwg/233 KB)



**Type 3, inward-opening, section detail
1**

Drawing dxf (dxf/502 KB)

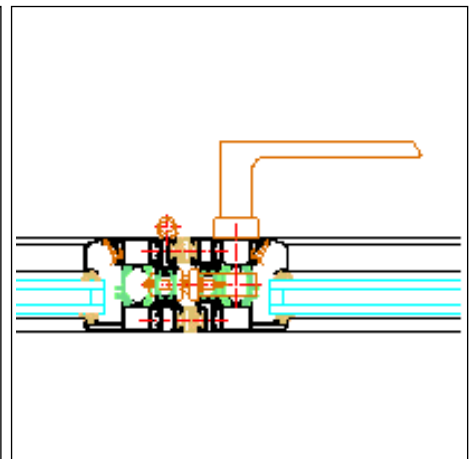
Drawing dwg (dwg/259 KB)



**Type 3, inward-opening, section detail
2**

Drawing dxf (dxf/266 KB)

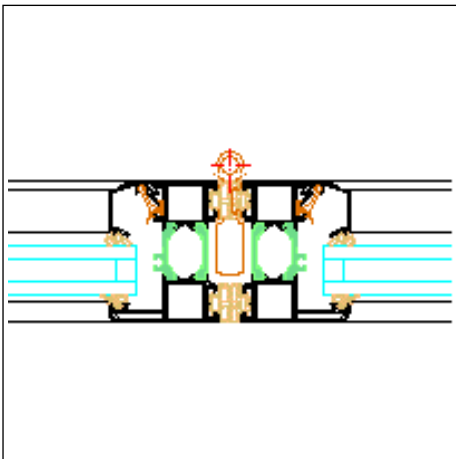
Drawing dwg (dwg/98 KB)



**Type 2, inward-opening, section detail
7_1**

Drawing dxf (dxf/336 KB)

Drawing dwg (dwg/117 KB)

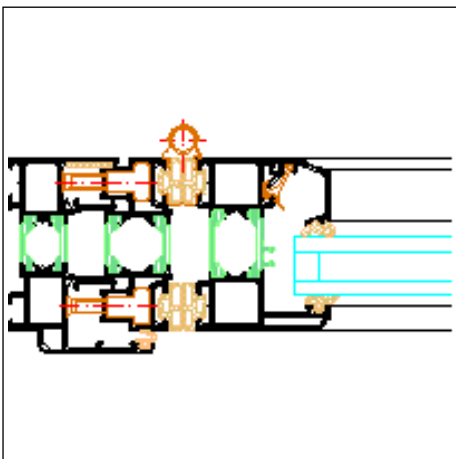


Type 3, inward-opening, section detail

3

Drawing dxf (dxf/247 KB)

Drawing dwg (dwg/93 KB)

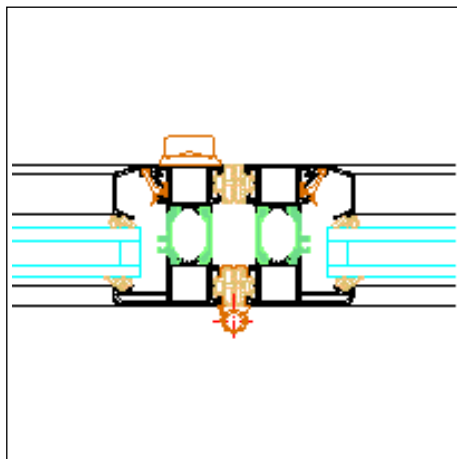


Type 3, inward-opening, section detail

1

Drawing dxf (dxf/502 KB)

Drawing dwg (dwg/259 KB)

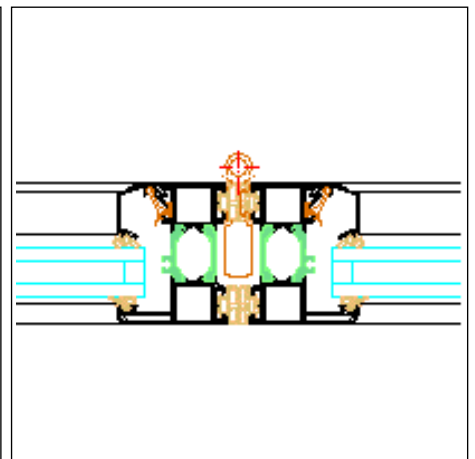


Type 3, inward-opening, section detail

2

Drawing dxf (dxf/266 KB)

Drawing dwg (dwg/98 KB)

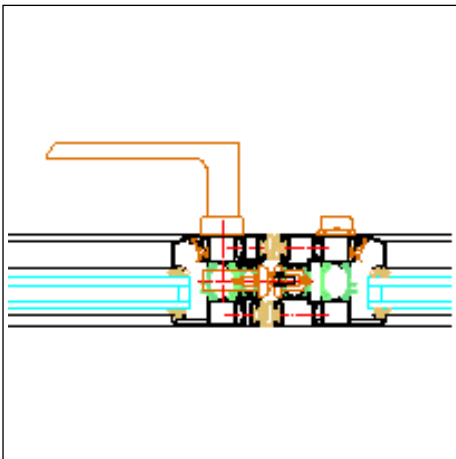


Type 3, inward-opening, section detail

3

Drawing dxf (dxf/247 KB)

Drawing dwg (dwg/93 KB)



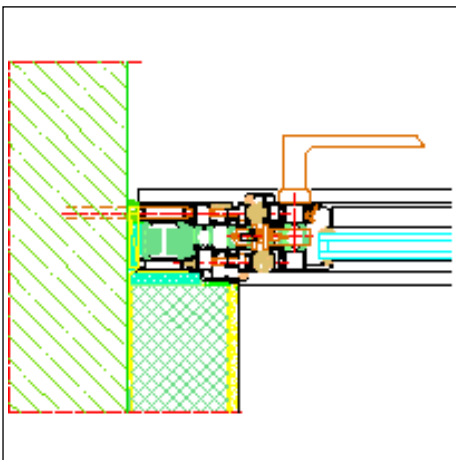
Type 6, inward-opening, section detail

6.3

Drawing dxf (dxf/437 KB)

Drawing dwg (dwg/157 KB)

Example 2, horizontal

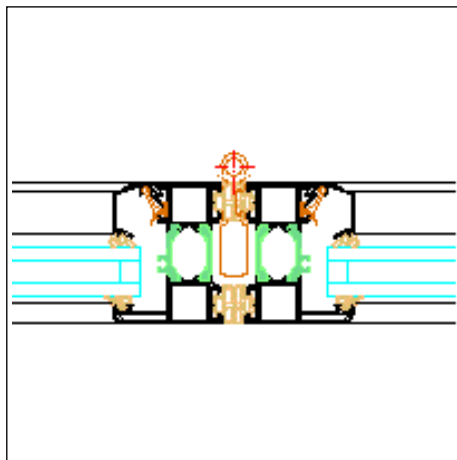


Type 1, inward-opening, section detail

5.2, flush threshold profile

Drawing dxf (dxf/1.3 MB)

Drawing dwg (dwg/624 KB)

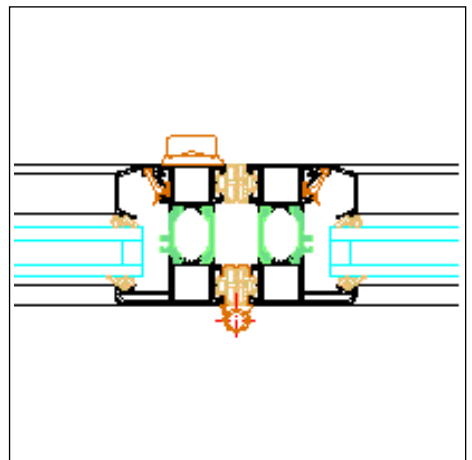


Type 3, inward-opening, section detail

3

Drawing dxf (dxf/247 KB)

Drawing dwg (dwg/93 KB)

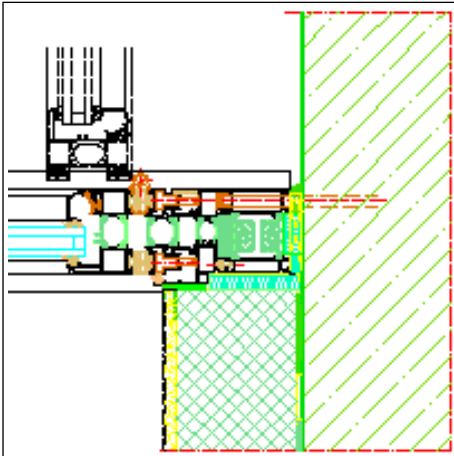


Type 3, inward-opening, section detail

2

Drawing dxf (dxf/266 KB)

Drawing dwg (dwg/98 KB)

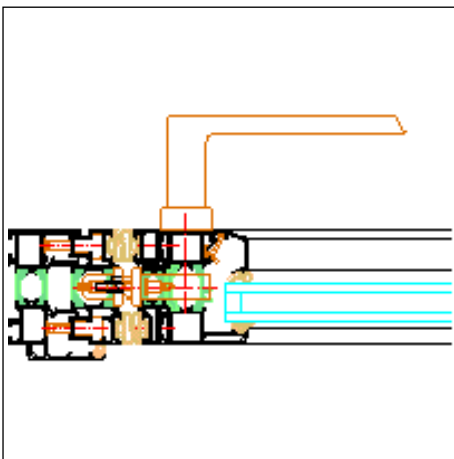


Type 1, inward-opening, section detail

1y

Drawing dxf (dxf/1.3 MB)

Drawing dwg (dwg/598 KB)

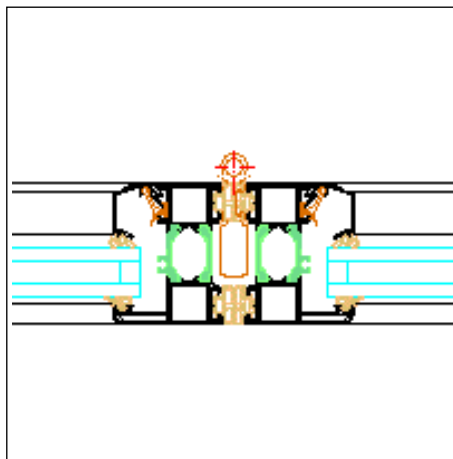


Type 1, inward-opening, section detail

5

Drawing dxf (dxf/470 KB)

Drawing dwg (dwg/154 KB)

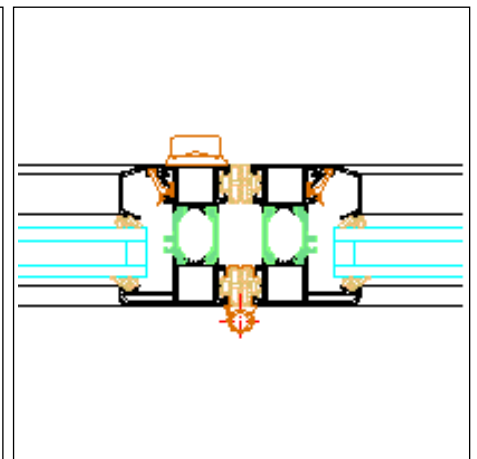


Type 3, inward-opening, section detail

3

Drawing dxf (dxf/247 KB)

Drawing dwg (dwg/93 KB)

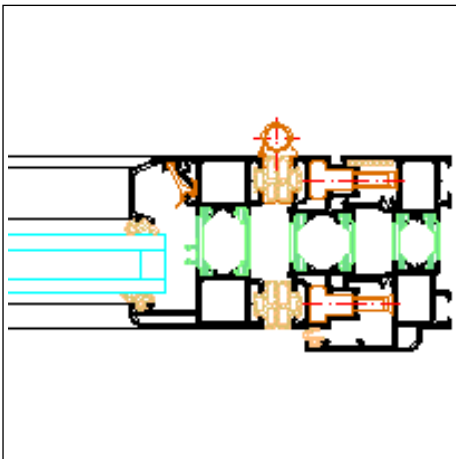


Type 3, inward-opening, section detail

2

Drawing dxf (dxf/266 KB)

Drawing dwg (dwg/98 KB)

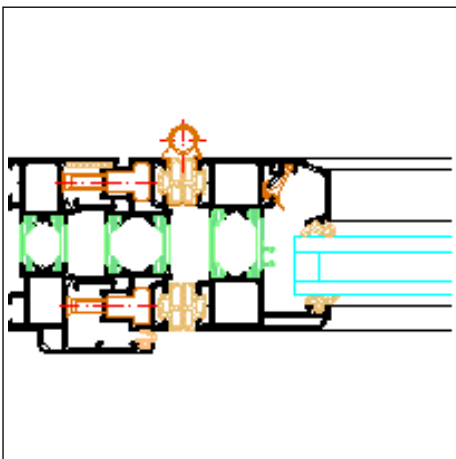


Type 1, inward-opening, section detail

1y

Drawing dxf (dxf/452 KB)

Drawing dwg (dwg/234 KB)

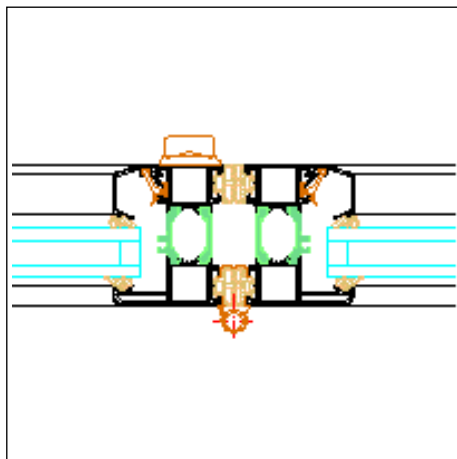


Type 3, inward-opening, section detail

1

Drawing dxf (dxf/502 KB)

Drawing dwg (dwg/259 KB)

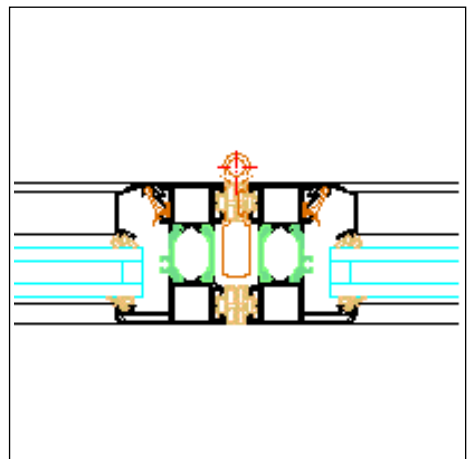


Type 3, inward-opening, section detail

2

Drawing dxf (dxf/266 KB)

Drawing dwg (dwg/98 KB)

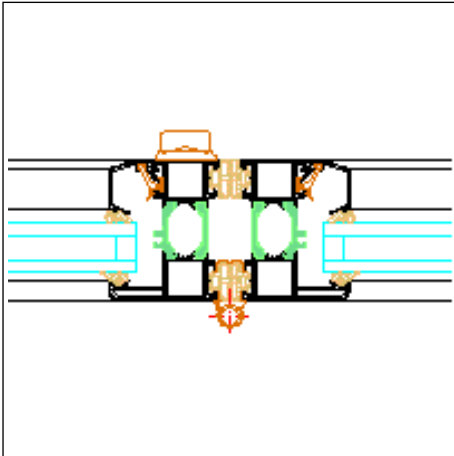


Type 3, inward-opening, section detail

3

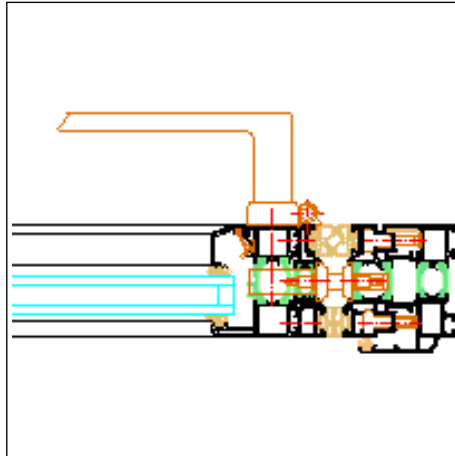
Drawing dxf (dxf/247 KB)

Drawing dwg (dwg/93 KB)



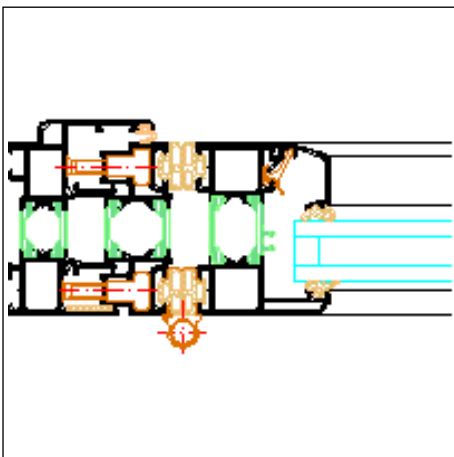
Type 3, inward-opening, section detail 2

Drawing dxf (dxf/266 KB)
Drawing dwg (dwg/98 KB)



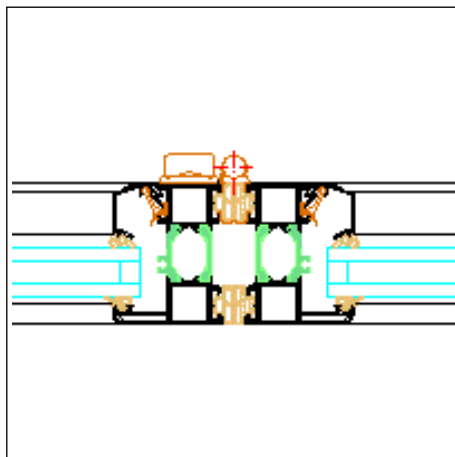
Type 3, inward-opening, section detail 4

Drawing dxf (dxf/520 KB)
Drawing dwg (dwg/167 KB)



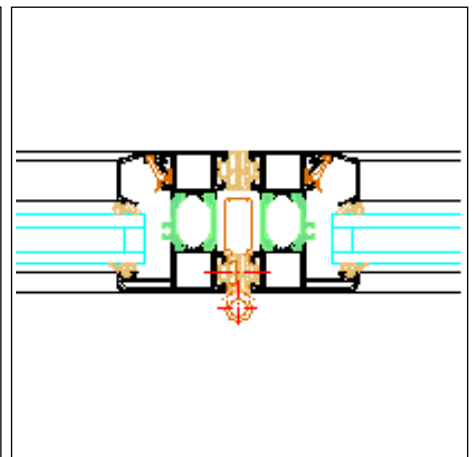
Type 3, outward-opening, section detail 1

Drawing dxf (dxf/389 KB)
Drawing dwg (dwg/132 KB)



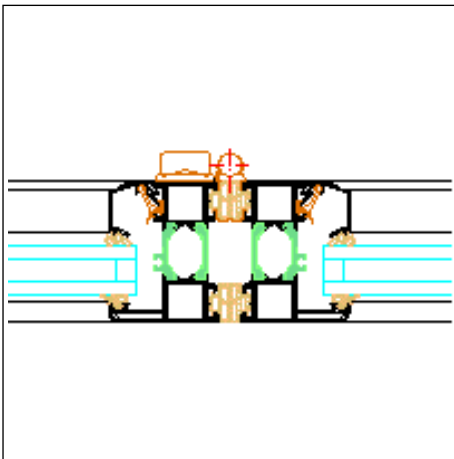
Type 3, outward-opening, section detail 2

Drawing dxf (dxf/266 KB)
Drawing dwg (dwg/99 KB)



Type 3, outward-opening, section detail 3

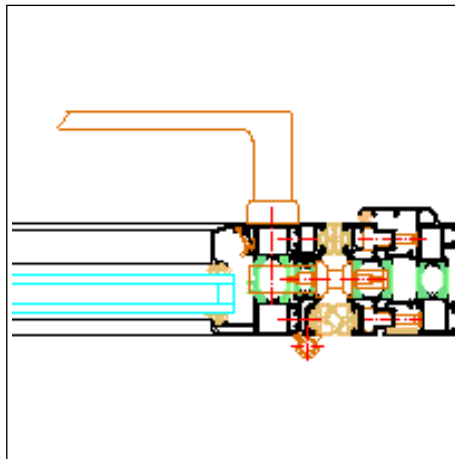
Drawing dxf (dxf/247 KB)
Drawing dwg (dwg/93 KB)



Type 3, outward-opening, section detail 2

Drawing dxf (dxf/266 KB)

Drawing dwg (dwg/99 KB)

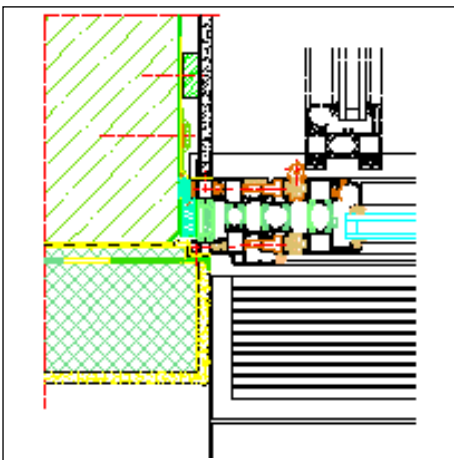


Type 3, outward-opening, section detail 4

Drawing dxf (dxf/525 KB)

Drawing dwg (dwg/170 KB)

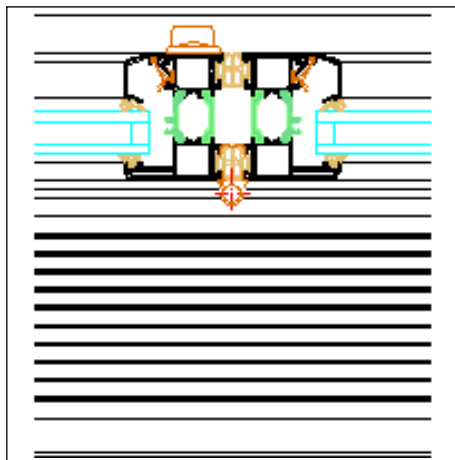
Example 1, horizontal



Type 3, inward-opening, section detail 1

Drawing dxf (dxf/968 KB)

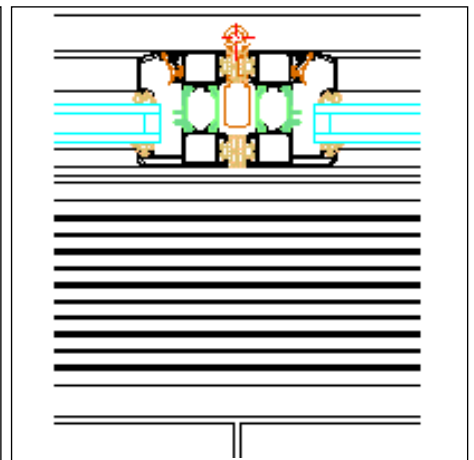
Drawing dwg (dwg/433 KB)



Type 3, inward-opening, section detail 2

Drawing dxf (dxf/532 KB)

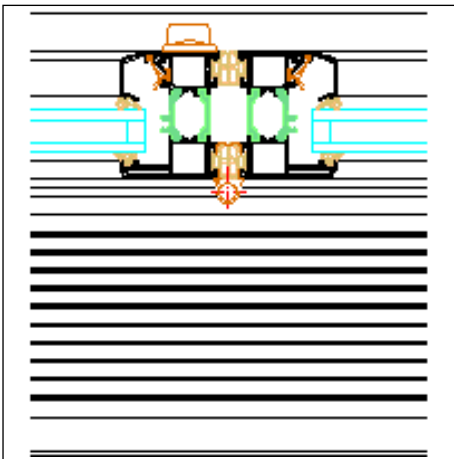
Drawing dwg (dwg/311 KB)



Type 3, inward-opening, section detail 3

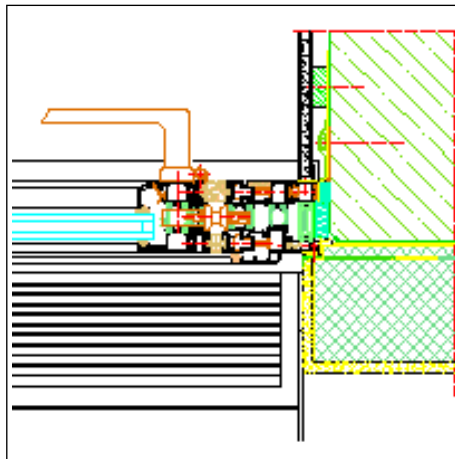
Drawing dxf (dxf/514 KB)

Drawing dwg (dwg/306 KB)



Type 3, inward-opening, section detail 2

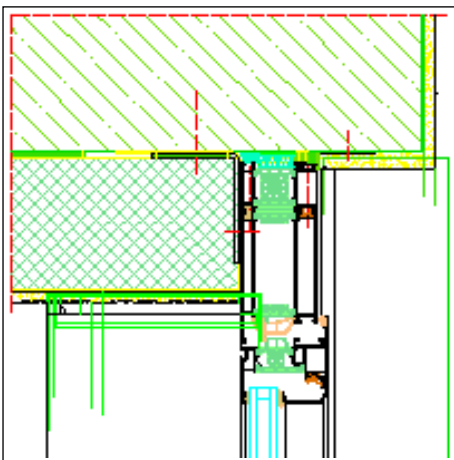
Drawing dxf (dxf/532 KB)
Drawing dwg (dwg/311 KB)



Type 3, inward-opening, section detail 4

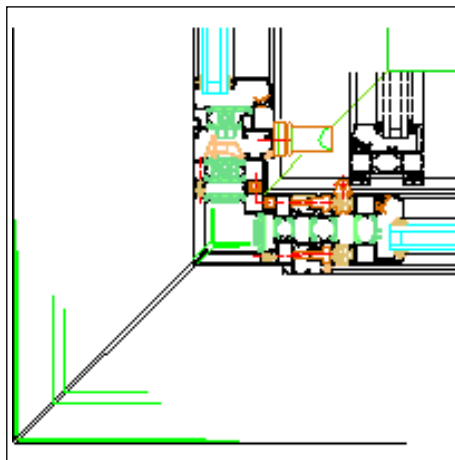
Drawing dxf (dxf/999 KB)
Drawing dwg (dwg/442 KB)

Balcony glazing design (H)



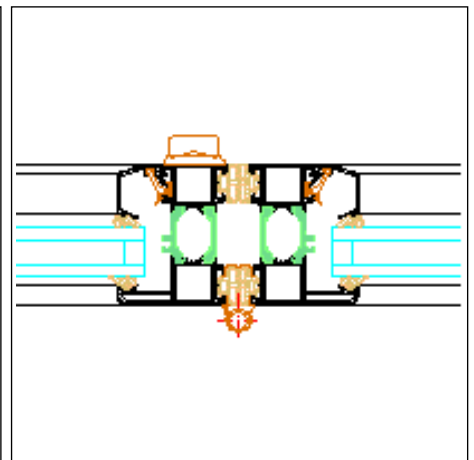
Side wall attachment

Drawing dxf (dxf/20.4 MB)
Drawing dwg (dwg/8.7 MB)



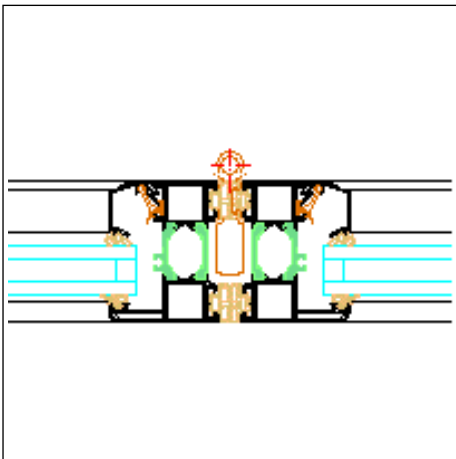
Type 3, inward-opening, section detail 1

Drawing dxf (dxf/20.7 MB)
Drawing dwg (dwg/8.7 MB)



Type 3, inward-opening, section detail 2

Drawing dxf (dxf/266 KB)
Drawing dwg (dwg/98 KB)

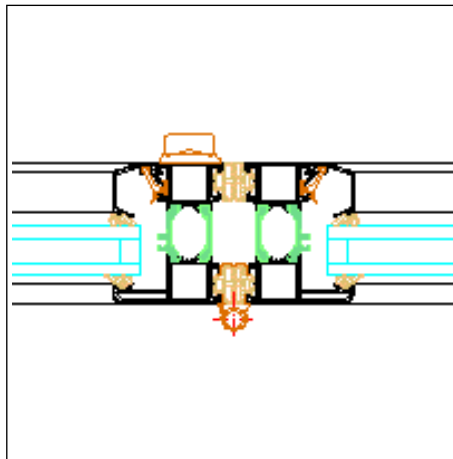


Type 3, inward-opening, section detail

3

Drawing dxf (dxf/247 KB)

Drawing dwg (dwg/93 KB)

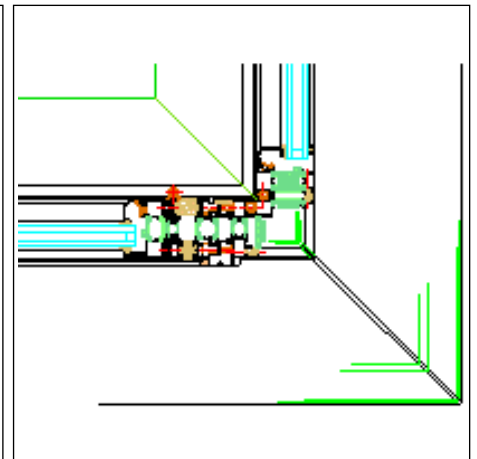


Type 3, inward-opening, section detail

2

Drawing dxf (dxf/266 KB)

Drawing dwg (dwg/98 KB)

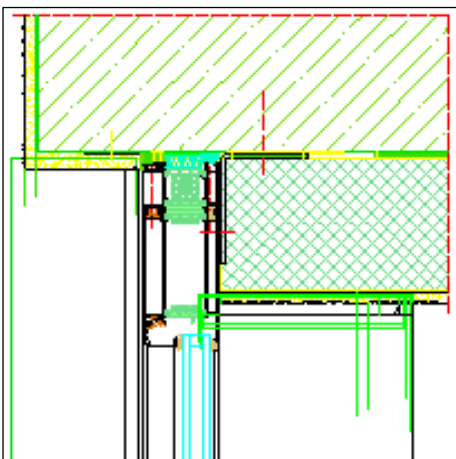


Type 3, inward-opening, section detail

4

Drawing dxf (dxf/20.5 MB)

Drawing dwg (dwg/8.7 MB)



Side wall attachment

Drawing dxf (dxf/20.3 MB)

Drawing dwg (dwg/8.7 MB)