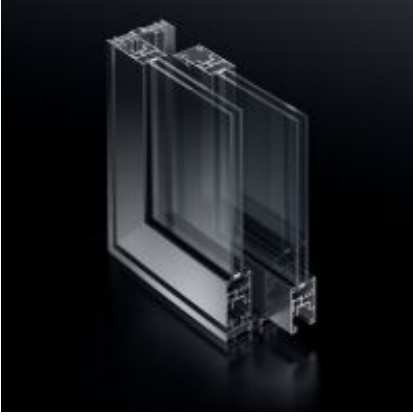


Schüco ASS 50: Büyük çıkış açıklıkları için sürme kapılar

Schüco ASS 50 sisteminin sürme kapıları, cömert, engel oluşturmayan ve rahat geçiş sağlayan açıklıklar sağlar (üç ray ile ünite genişliğinin üçte ikisi kadar) ve asgari düzeyde yer kaplar. Sürme kanatlar tek bir düzeyde çalıştığından içeri veya dışarı açılan kapı kanatları mevcut değildir. Kapalı durumda alüminyum sistem, mükemmel su geçirmezlik özellikleri sayesinde üst düzey ısı ve ses yalıtımı sunar.



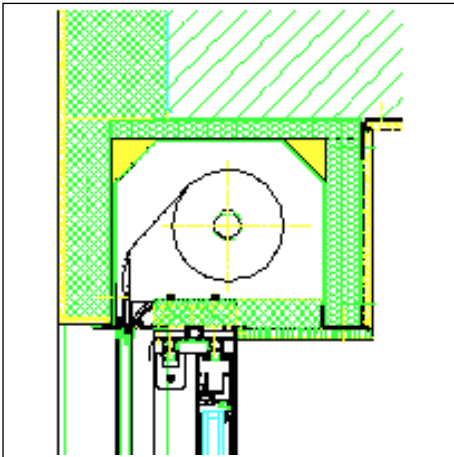
Temel yararlar:

- Isıl yalıtımlı, yüksek kararlılığa sahip alüminyum profiller
- e-sürme'nin bütünlendirilmesi: tamamen gizli, elektrikle çalıştırılan mekanizma
- Paslanmaz çelikten raylar düzgün, sessiz çalışma sağlar
- İnce kanat çerçevesi alın genişlikleri (84 mm)
- Profil iç ve dış yüzeyinde farklı renkler (renkli boyanmış veya anotlanmış yüzey)
- Mükemmel sistem uyumluluğu sayesinde iyi seviyede tasarım özgürlüğü
- Opsiyonel hırsızdan koruma
- Kaldır-ve-sür sistemler için ses yalıtımının iyileştirilmesine yönelik çift kesintisiz EPDM contası
- 600 Pa'ya kadar su geçirmez
- 300 kg'ye kadar kanat ağırlıkları mümkün
- Schüco AWS sistemine kolayca bağlanır (adaptör profili)

Tasarımda sınırsız özgürlük sağlar Sürme kapı konstrüksiyonları, çerçeve çubukları, özel cam çitalar ve paslanmaz çelikten mekanizmalar kullanılarak özel müşteri gereksinimlerini mükemmel şekilde karşılayacak şekilde hazırlanabilir. Schüco ASS 50 sistemi, özel konut sektöründe (kış bahçeleri dahil), otel ve yiyecek-içecek sektöründe ve ofis binalarında sürme pencereler olarak ideal proje çözümleri sunar.

CAD-Drawings

Attachments to structure 1

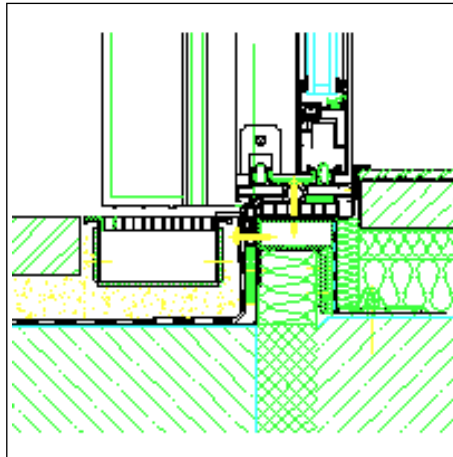


Top attachment to roller shutter casing

Type 2A, max. vent weight 300 kg

Drawing dxf (dxf/1.2 MB)

Drawing dwg (dwg/585 KB)

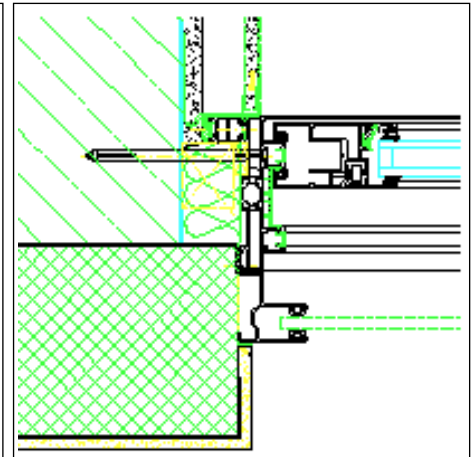


Bottom attachment, crossover to patio

Type 2A, max. vent weight 300 kg

Drawing dxf (dxf/803 KB)

Drawing dwg (dwg/163 KB)

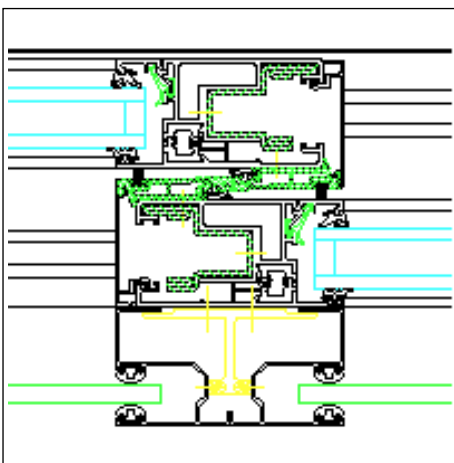


Side wall attachment Type 2A, max.

vent weight 300 kg

Drawing dxf (dxf/551 KB)

Drawing dwg (dwg/108 KB)



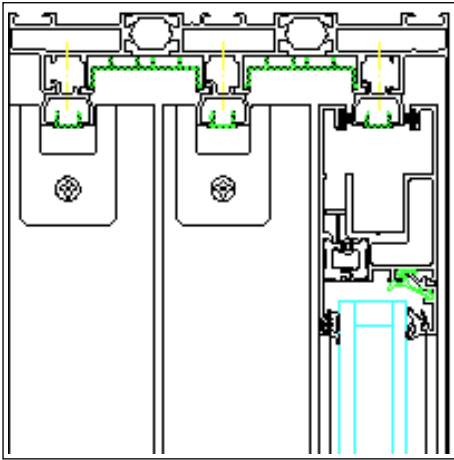
Interlock section, section detail (4)

Type 2A, max. vent weight 300 kg

Drawing dxf (dxf/1.2 MB)

Drawing dwg (dwg/558 KB)

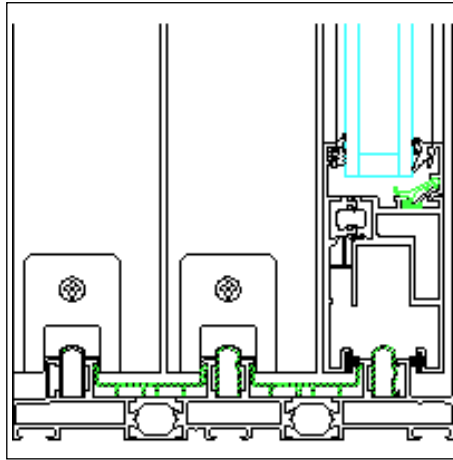
Type 3F



Top section detail (1) Triple track design, max. 300 kg

Drawing dxf (dxf/593 KB)

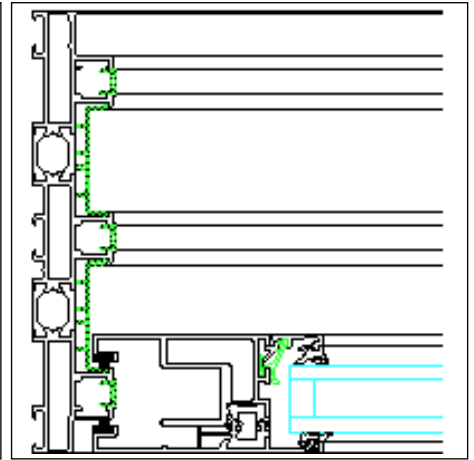
Drawing dwg (dwg/278 KB)



Bottom section detail (2) Triple track design, max. 300 kg

Drawing dxf (dxf/587 KB)

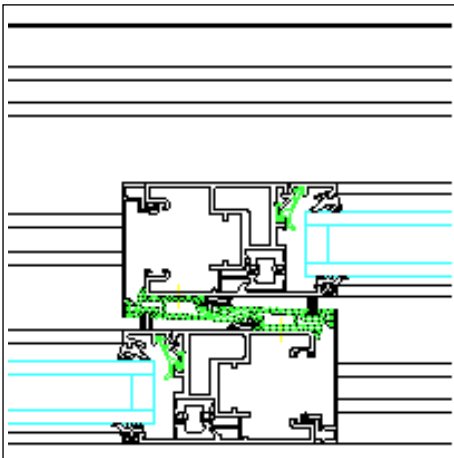
Drawing dwg (dwg/276 KB)



Side section detail (7) with fixed light (vent) outside

Drawing dxf (dxf/576 KB)

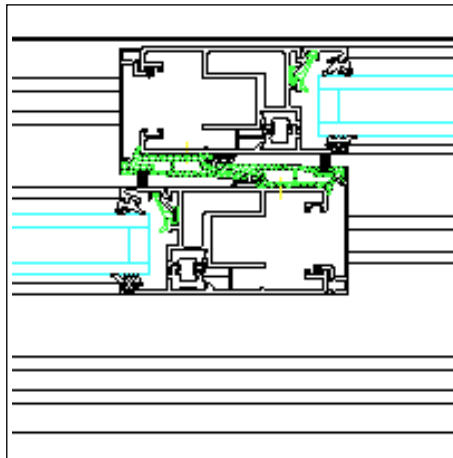
Drawing dwg (dwg/272 KB)



Interlock section detail (4) Fixed field (vent) / vent

Drawing dxf (dxf/614 KB)

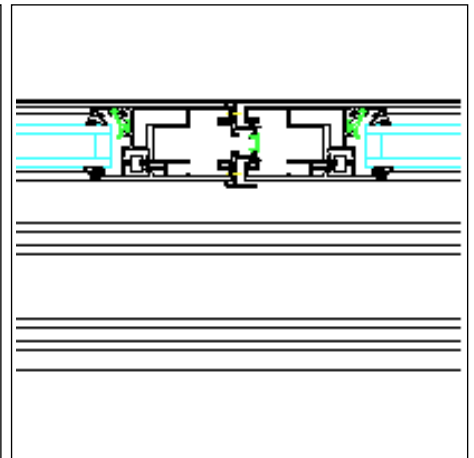
Drawing dwg (dwg/283 KB)



Interlock section detail (4) Vent / vent inside

Drawing dxf (dxf/617 KB)

Drawing dwg (dwg/284 KB)

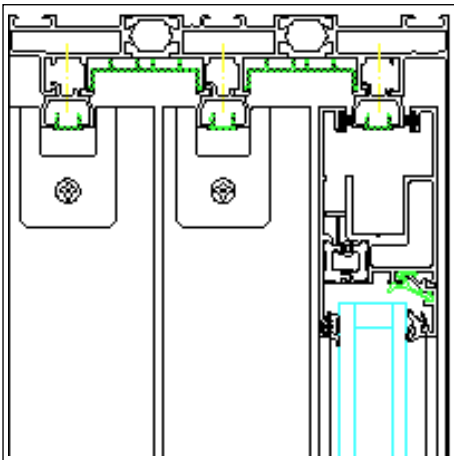


Interlock section detail (6) Vent to vent inside

Drawing dxf (dxf/552 KB)

Drawing dwg (dwg/264 KB)

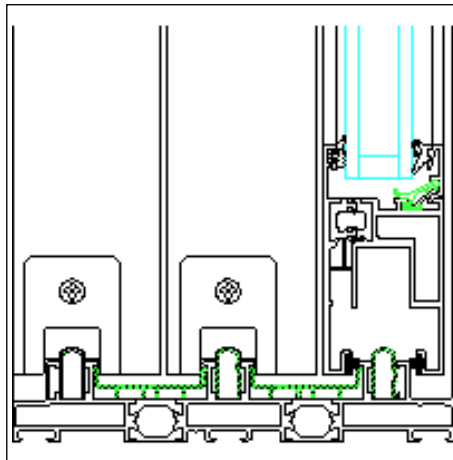
Type 3E



Top section detail (1) Triple track design, max. 300 kg

Drawing dxf (dxf/593 KB)

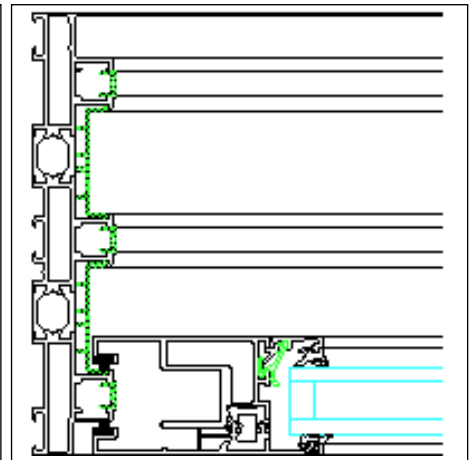
Drawing dwg (dwg/278 KB)



Bottom section detail (2) Triple track design, max. 300 kg

Drawing dxf (dxf/587 KB)

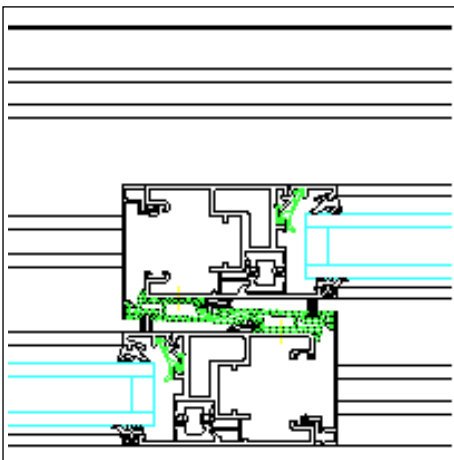
Drawing dwg (dwg/276 KB)



Side section detail (7) with fixed light (vent) outside

Drawing dxf (dxf/575 KB)

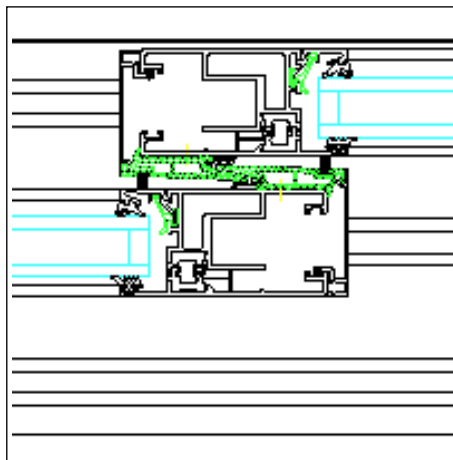
Drawing dwg (dwg/273 KB)



Interlock section detail (4) Fixed field (vent) / vent

Drawing dxf (dxf/614 KB)

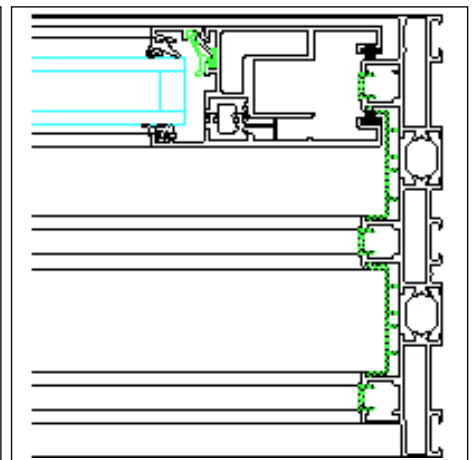
Drawing dwg (dwg/283 KB)



Interlock section detail (4) Vent / vent inside

Drawing dxf (dxf/617 KB)

Drawing dwg (dwg/284 KB)

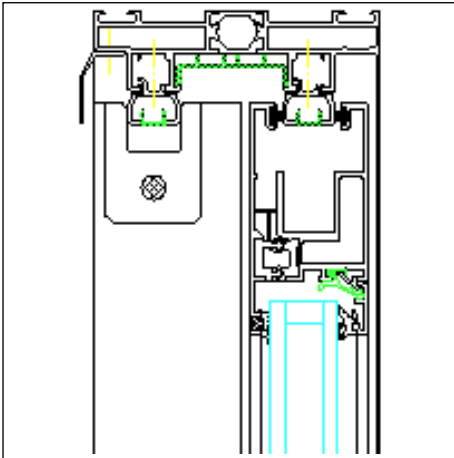


Side section detail (3) with vent on inside

Drawing dxf (dxf/576 KB)

Drawing dwg (dwg/273 KB)

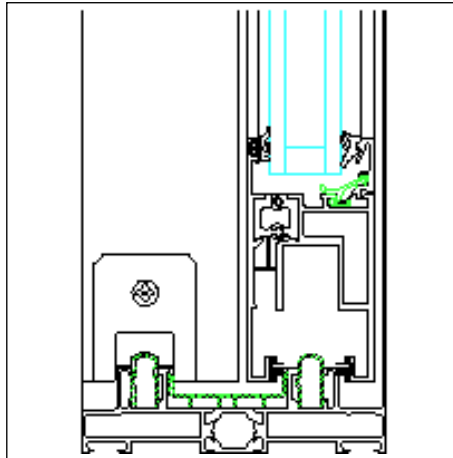
Type 2A



Top section detail (1) Double track design, max. 300 kg

Drawing dxf (dxf/573 KB)

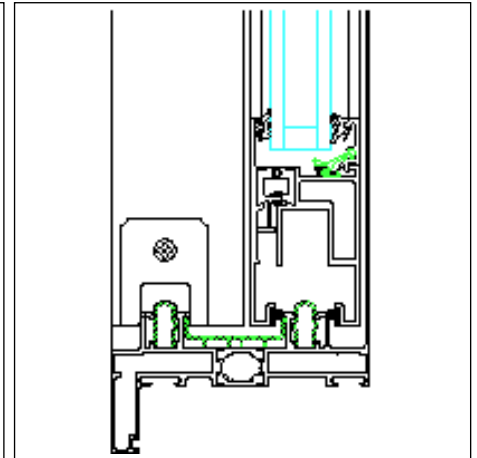
Drawing dwg (dwg/271 KB)



Bottom section detail (2) Double track design, max. 300 kg

Drawing dxf (dxf/568 KB)

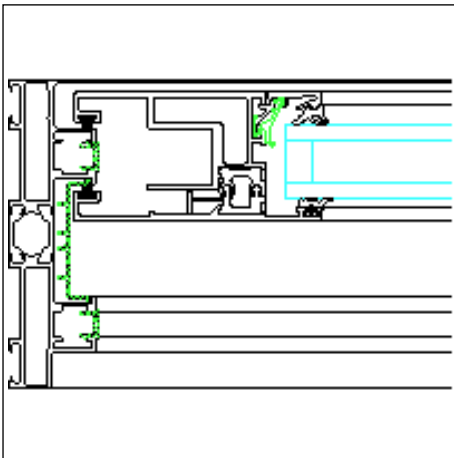
Drawing dwg (dwg/269 KB)



Bottom section detail (2) alternative Double track design, max. 300 kg

Drawing dxf (dxf/575 KB)

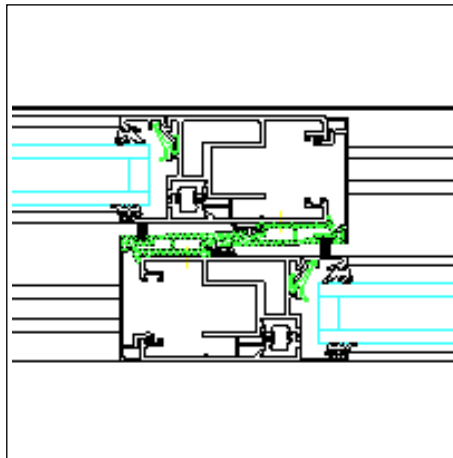
Drawing dwg (dwg/271 KB)



Side section detail (3) with vent on inside

Drawing dxf (dxf/554 KB)

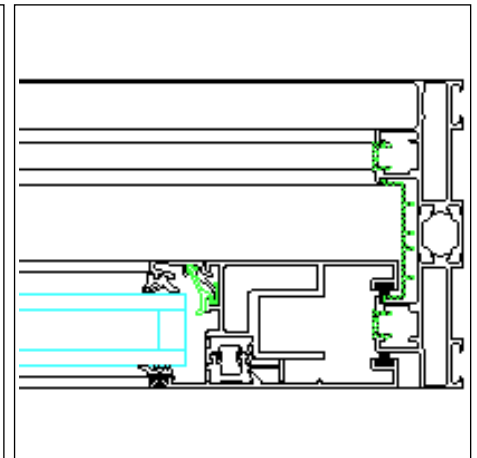
Drawing dwg (dwg/267 KB)



Interlock section detail (4) Vent / vent

Drawing dxf (dxf/614 KB)

Drawing dwg (dwg/284 KB)

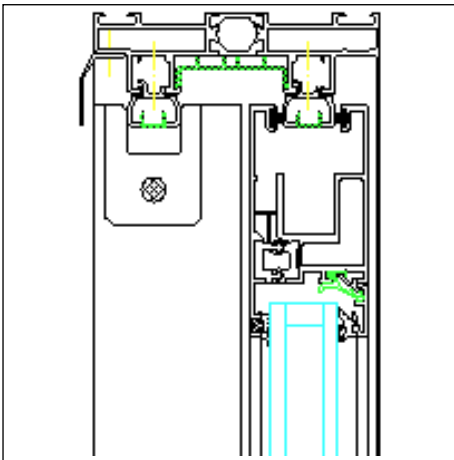


Side section detail (7) with vent on the outside

Drawing dxf (dxf/553 KB)

Drawing dwg (dwg/267 KB)

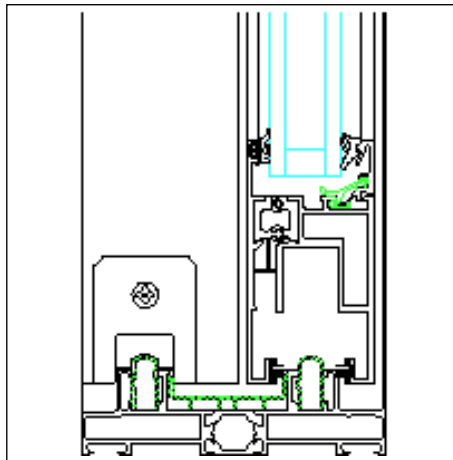
Type 2D



Top section detail (1) Double track design, max. 300 kg

Drawing dxf (dxf/573 KB)

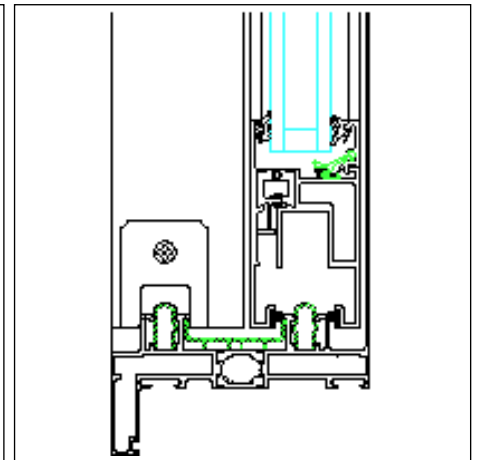
Drawing dwg (dwg/271 KB)



Bottom section detail (2) Double track design, max. 300 kg

Drawing dxf (dxf/568 KB)

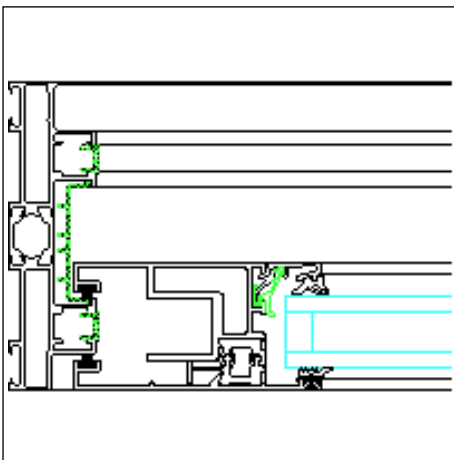
Drawing dwg (dwg/269 KB)



Bottom section detail (2) alternative Double track design, max. 300 kg

Drawing dxf (dxf/575 KB)

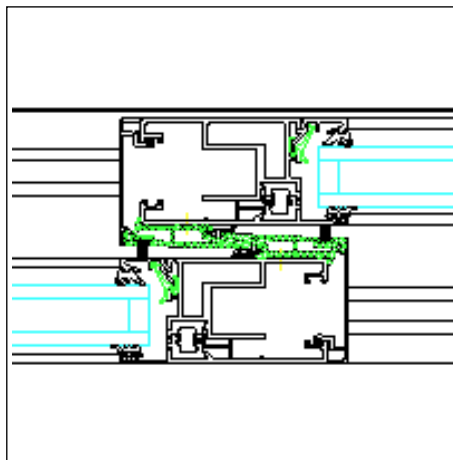
Drawing dwg (dwg/271 KB)



Side section detail (7) with fixed light (vent) outside

Drawing dxf (dxf/553 KB)

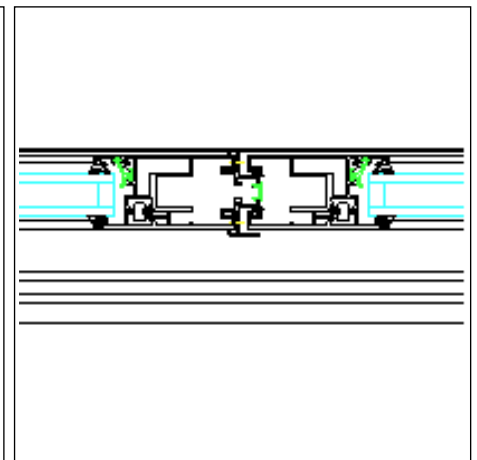
Drawing dwg (dwg/266 KB)



Interlock section detail (4) Fixed field (vent) / vent

Drawing dxf (dxf/587 KB)

Drawing dwg (dwg/276 KB)

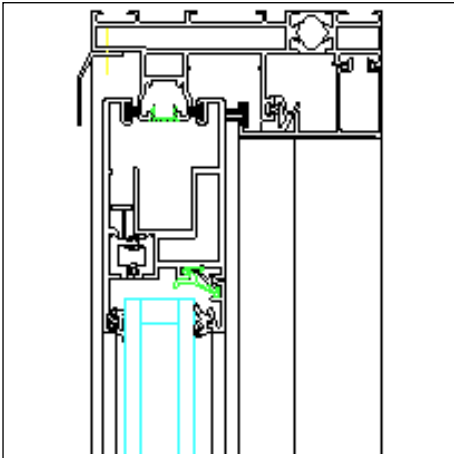


Interlock section detail (6) Vent to vent inside

Drawing dxf (dxf/551 KB)

Drawing dwg (dwg/264 KB)

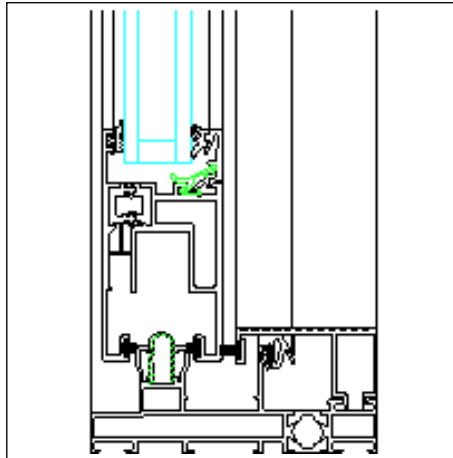
Type 1A



Top section detail (1) Design with track, max. 300 kg

Drawing dxf (dxf/570 KB)

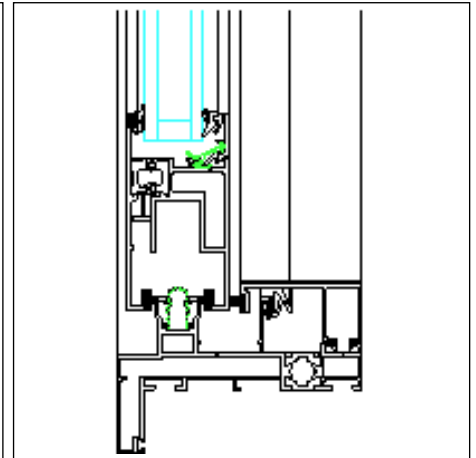
Drawing dwg (dwg/270 KB)



Bottom section detail (2) Design with track, max. 300 kg

Drawing dxf (dxf/567 KB)

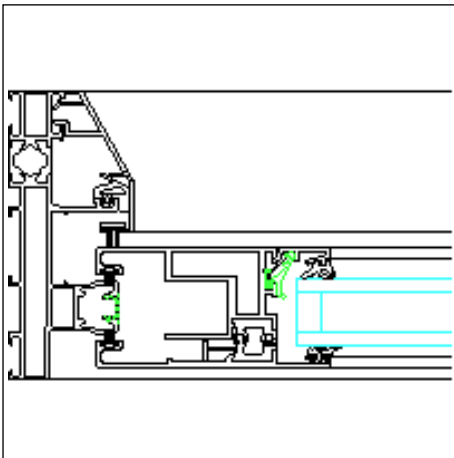
Drawing dwg (dwg/269 KB)



Alternative bottom section detail (2) Design with track, max. 300 kg

Drawing dxf (dxf/609 KB)

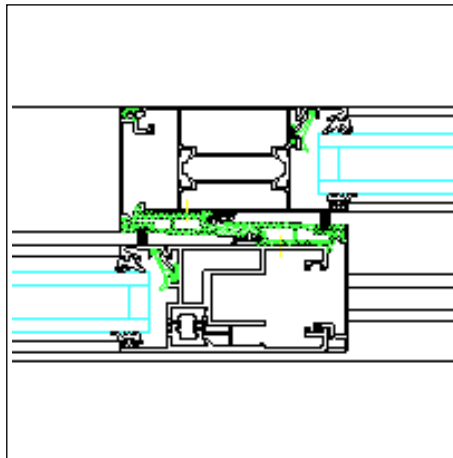
Drawing dwg (dwg/279 KB)



Side section detail (3) Design with single track, max. 300 kg

Drawing dxf (dxf/559 KB)

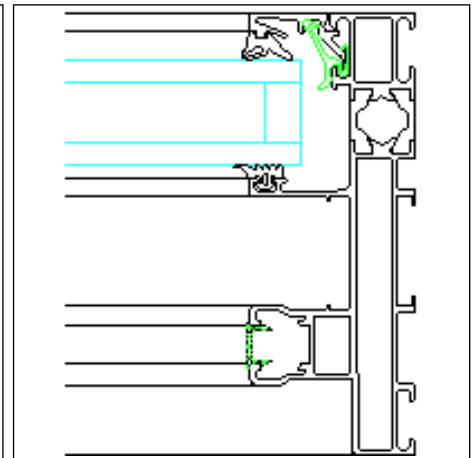
Drawing dwg (dwg/267 KB)



Interlock section detail (4) Fixed glazing in outer frame

Drawing dxf (dxf/653 KB)

Drawing dwg (dwg/294 KB)

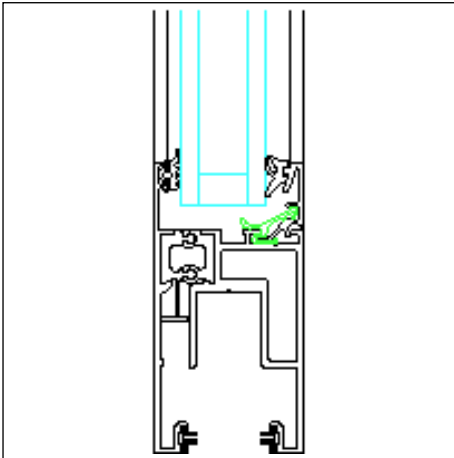


Side section detail(7) Fixed glazing in outer frame

Drawing dxf (dxf/490 KB)

Drawing dwg (dwg/248 KB)

Supplements

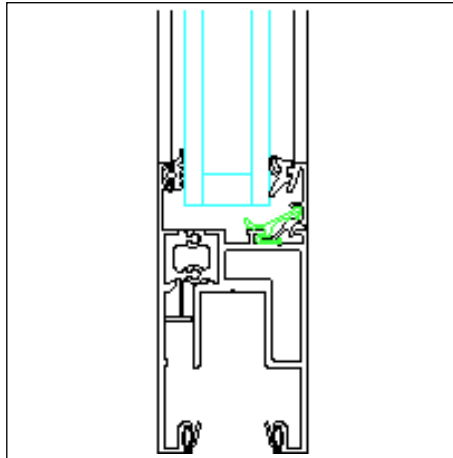


Vent face width 96 mm, max. 300 kg

Sliding windows/doors

Drawing dxf (dxf/511 KB)

Drawing dwg (dwg/248 KB)

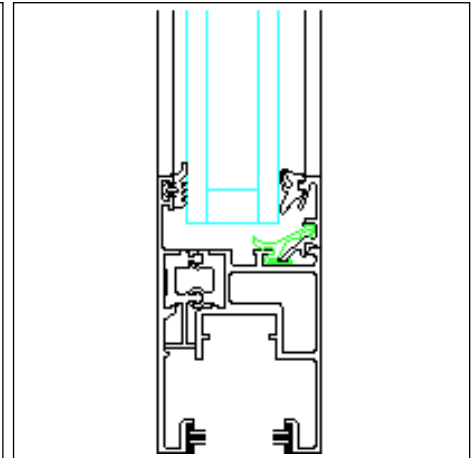


Vent face width 96 mm, max. 300 kg

Sliding windows/doors

Drawing dxf (dxf/514 KB)

Drawing dwg (dwg/250 KB)

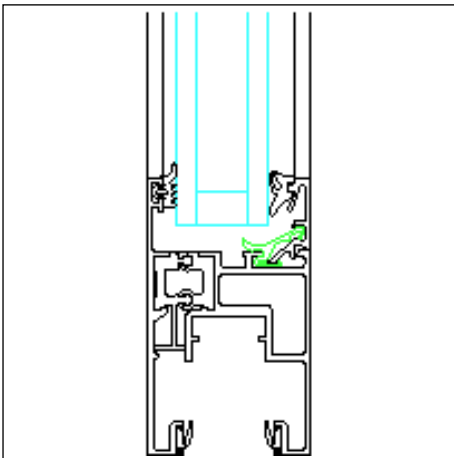


Vent face width 84 mm, max. 150 kg

Sliding windows/doors

Drawing dxf (dxf/518 KB)

Drawing dwg (dwg/251 KB)

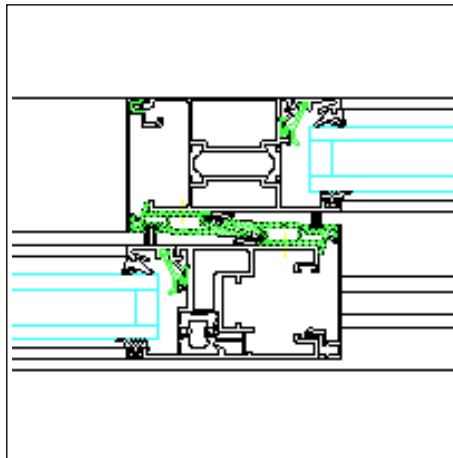


Vent face width 84 mm, max. 150 kg

Lift-and-slide door (gasket)

Drawing dxf (dxf/521 KB)

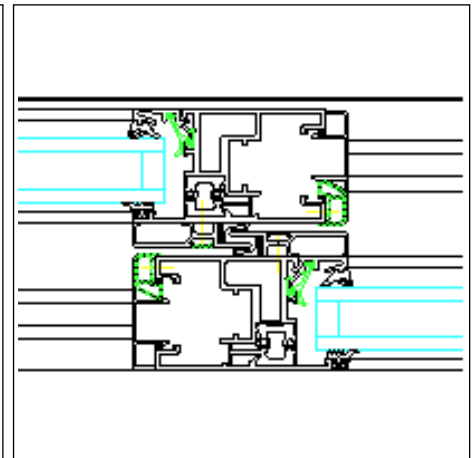
Drawing dwg (dwg/252 KB)



Interlock (4) for Type 1A, alternative with vent 84 mm, max. 150 kg

Drawing dxf (dxf/653 KB)

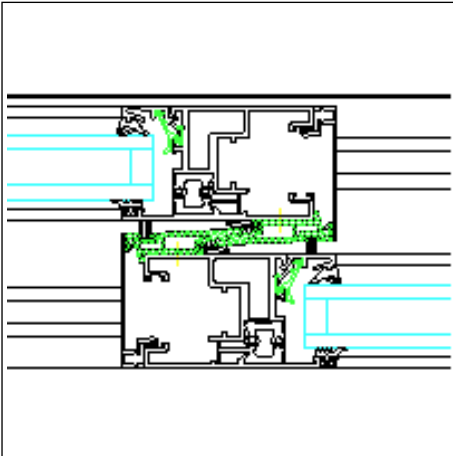
Drawing dwg (dwg/295 KB)



Interlock (4) for Type 2C, alternative with vent 84 mm, max. 150 kg

Drawing dxf (dxf/558 KB)

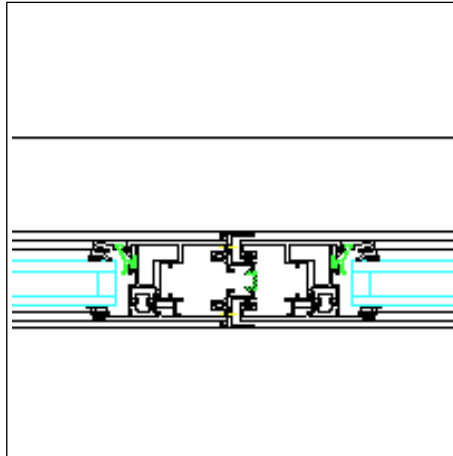
Drawing dwg (dwg/266 KB)



Interlock (4) for Type 2A, alternative with vent 84 mm, max. 150 kg

Drawing dxf (dxf/613 KB)

Drawing dwg (dwg/283 KB)

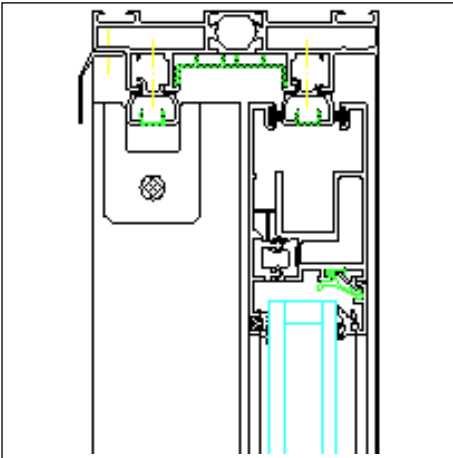


Interlock (6) for Type 1D, alternative with vent 84 mm, max. 150 kg

Drawing dxf (dxf/547 KB)

Drawing dwg (dwg/263 KB)

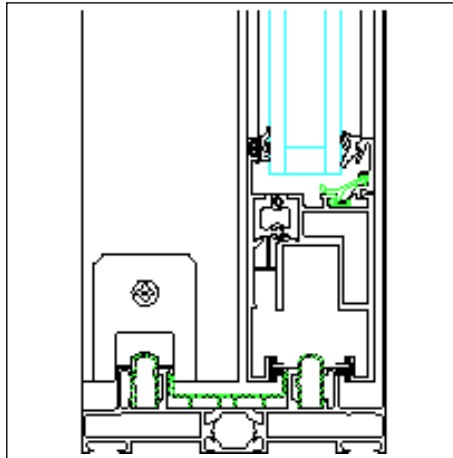
Type 2C



Top section detail (1) Double track design, max. 300 kg

Drawing dxf (dxf/573 KB)

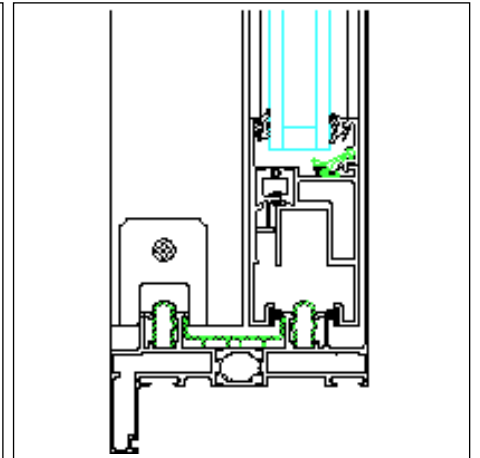
Drawing dwg (dwg/271 KB)



Bottom section detail (2) Double track design, max. 300 kg

Drawing dxf (dxf/568 KB)

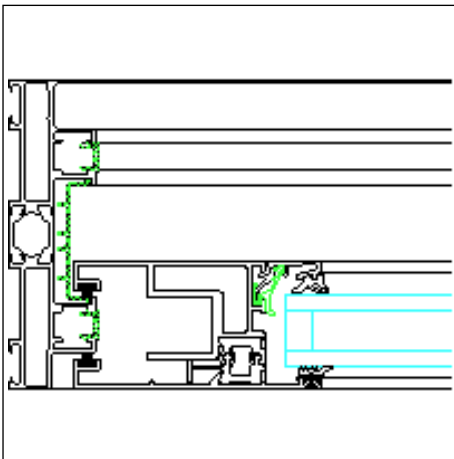
Drawing dwg (dwg/269 KB)



Bottom section detail (2) alternative Double track design, max. 300 kg

Drawing dxf (dxf/575 KB)

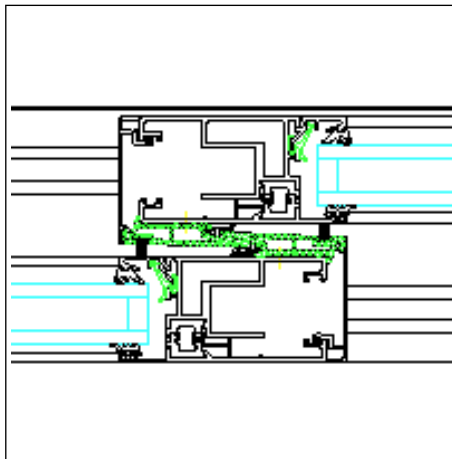
Drawing dwg (dwg/271 KB)



**Side section detail (7) with fixed light
(vent) outside**

Drawing dxf (dxf/553 KB)

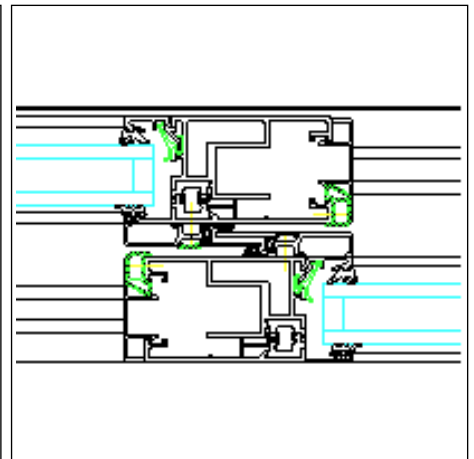
Drawing dwg (dwg/266 KB)



**Interlock section detail (4) Fixed field
(vent) / vent**

Drawing dxf (dxf/587 KB)

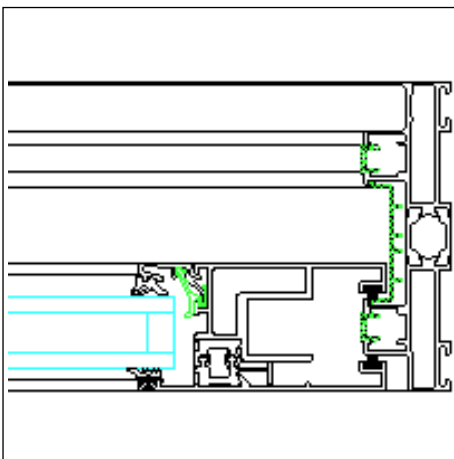
Drawing dwg (dwg/276 KB)



**Interlock section detail (5) Vent/ fixed
field (vent)**

Drawing dxf (dxf/560 KB)

Drawing dwg (dwg/266 KB)

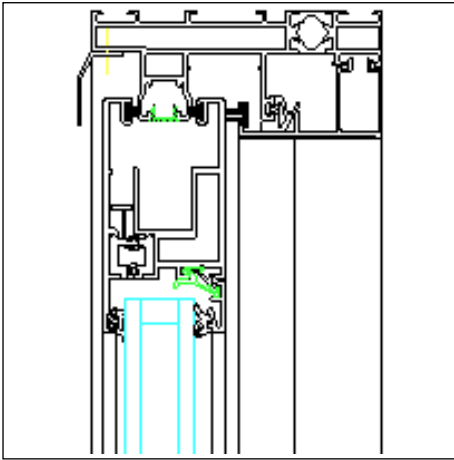


**Side section detail (7) with fixed light
(vent) outside**

Drawing dxf (dxf/553 KB)

Drawing dwg (dwg/267 KB)

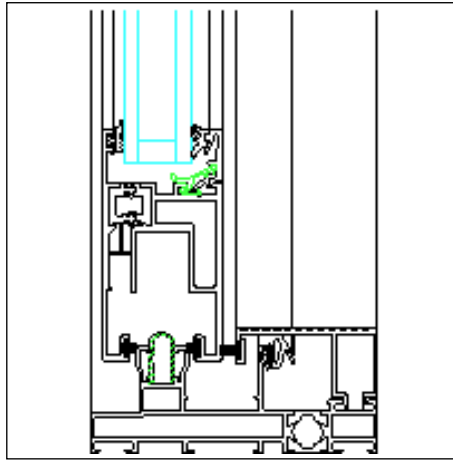
Type 1D



Top section detail (1) Design with track, max. 300 kg

Drawing dxf (dxf/570 KB)

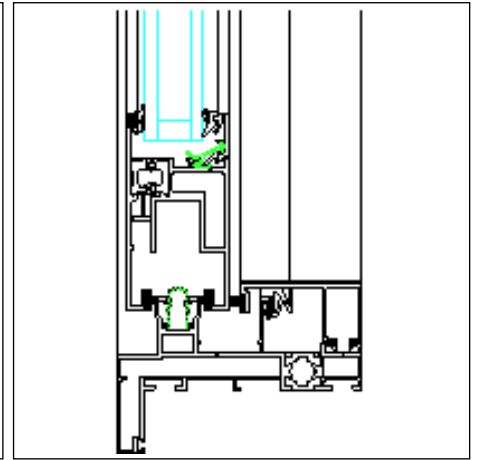
Drawing dwg (dwg/270 KB)



Bottom section detail (2) Design with track, max. 300 kg

Drawing dxf (dxf/567 KB)

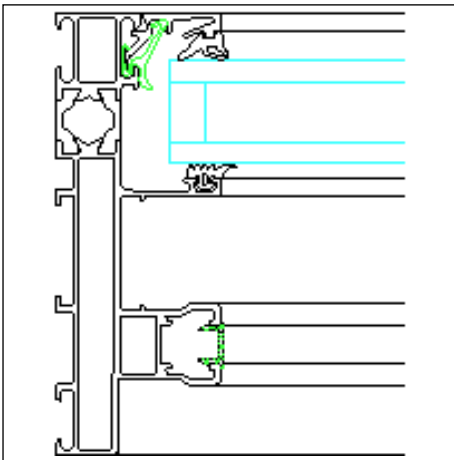
Drawing dwg (dwg/269 KB)



Alternative bottom section detail (2) Design with track, max. 300 kg

Drawing dxf (dxf/609 KB)

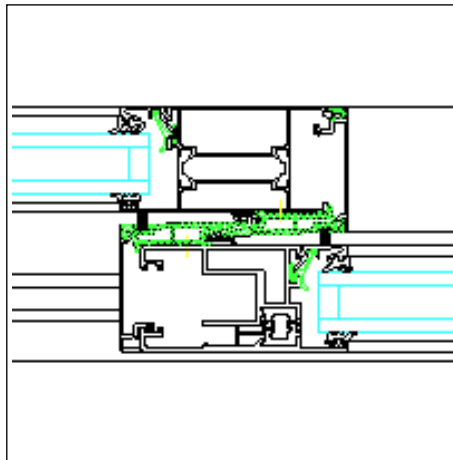
Drawing dwg (dwg/279 KB)



Side section detail(7) Fixed glazing in outer frame

Drawing dxf (dxf/490 KB)

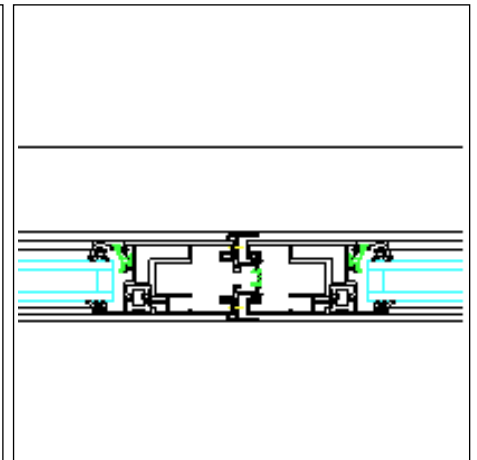
Drawing dwg (dwg/248 KB)



Interlock section detail (4) Fixed glazing in outer frame

Drawing dxf (dxf/656 KB)

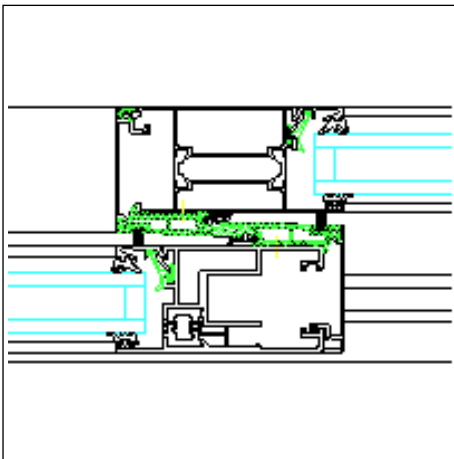
Drawing dwg (dwg/296 KB)



Interlock section detail (6) Vent to vent outside

Drawing dxf (dxf/549 KB)

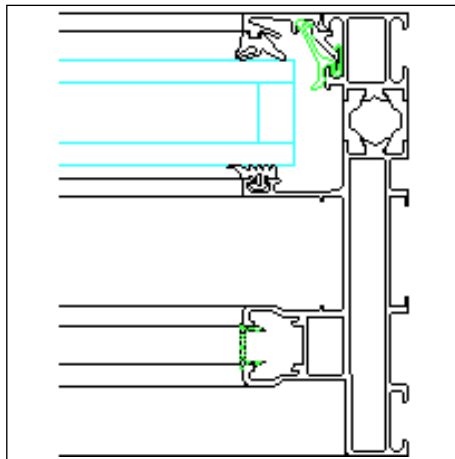
Drawing dwg (dwg/264 KB)



Interlock section detail (4) Fixed glazing in outer frame

Drawing dxf (dxf/653 KB)

Drawing dwg (dwg/294 KB)

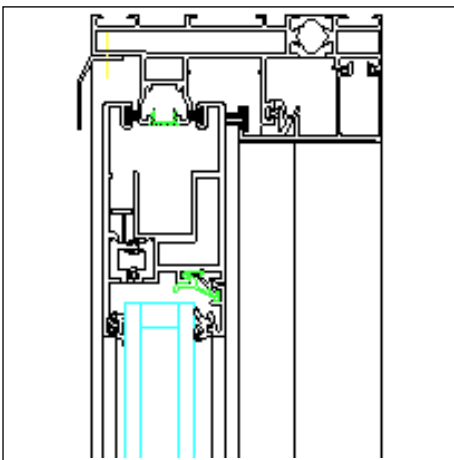


Side section detail(7) Fixed glazing in outer frame

Drawing dxf (dxf/490 KB)

Drawing dwg (dwg/248 KB)

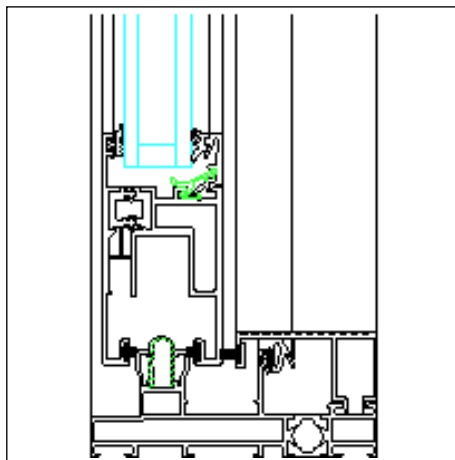
Type 1B



Top section detail (1) Design with track, max. 300 kg

Drawing dxf (dxf/570 KB)

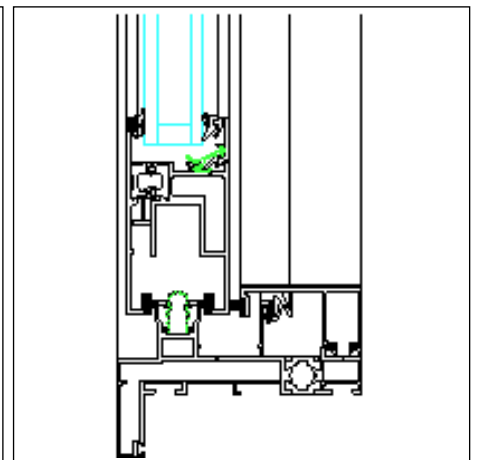
Drawing dwg (dwg/270 KB)



Bottom section detail (2) Design with track, max. 300 kg

Drawing dxf (dxf/567 KB)

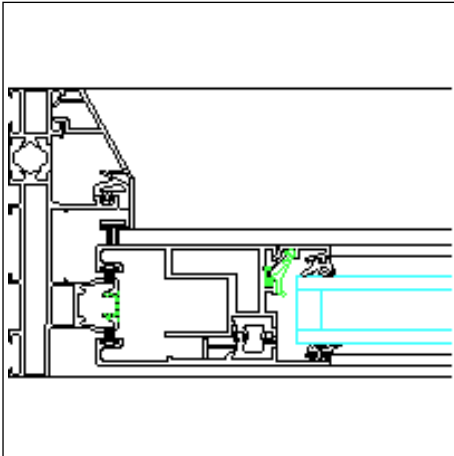
Drawing dwg (dwg/269 KB)



Alternative bottom section detail (2) Design with track, max. 300 kg

Drawing dxf (dxf/609 KB)

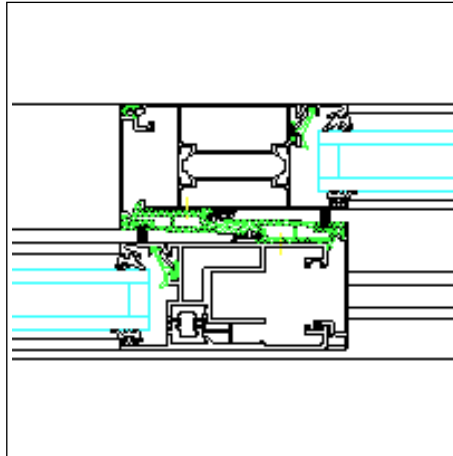
Drawing dwg (dwg/279 KB)



Side section detail (3) Design with single track, max. 300 kg

Drawing dxf (dxf/559 KB)

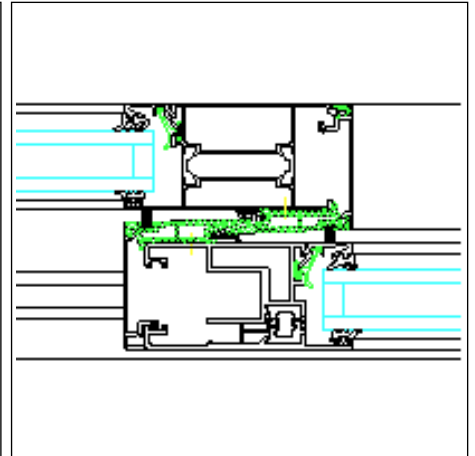
Drawing dwg (dwg/267 KB)



Interlock section detail (4) Fixed glazing in outer frame

Drawing dxf (dxf/653 KB)

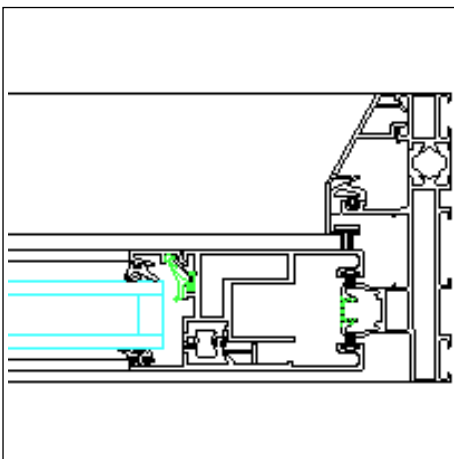
Drawing dwg (dwg/294 KB)



Interlock section detail (4) Fixed glazing in outer frame

Drawing dxf (dxf/656 KB)

Drawing dwg (dwg/296 KB)



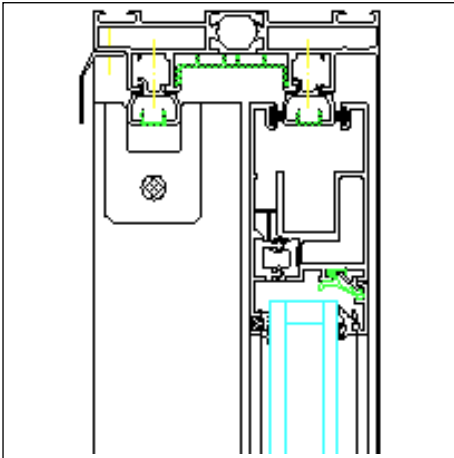
Side section detail (3) (mirror image)

Design with single track, max. 300 kg

Drawing dxf (dxf/559 KB)

Drawing dwg (dwg/268 KB)

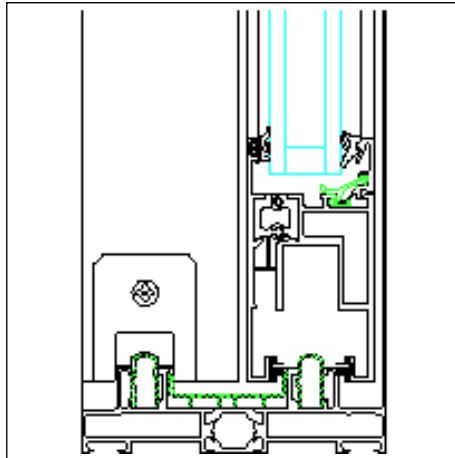
Type 2B



Top section detail (1) Double track design, max. 300 kg

Drawing dxf (dxf/573 KB)

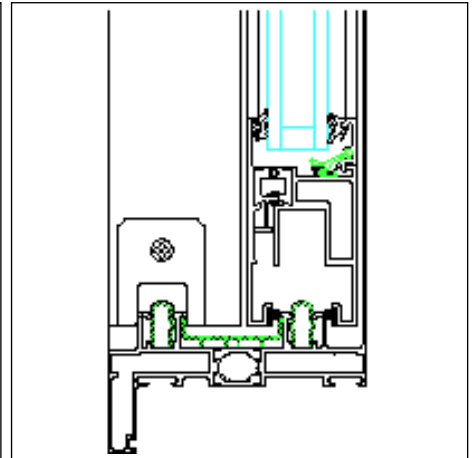
Drawing dwg (dwg/271 KB)



Bottom section detail (2) Double track design, max. 300 kg

Drawing dxf (dxf/568 KB)

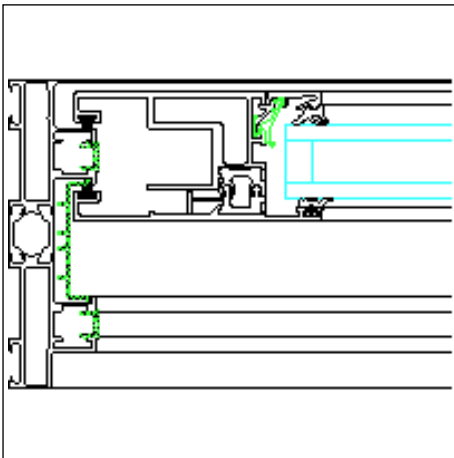
Drawing dwg (dwg/269 KB)



Bottom section detail (2) alternative Double track design, max. 300 kg

Drawing dxf (dxf/575 KB)

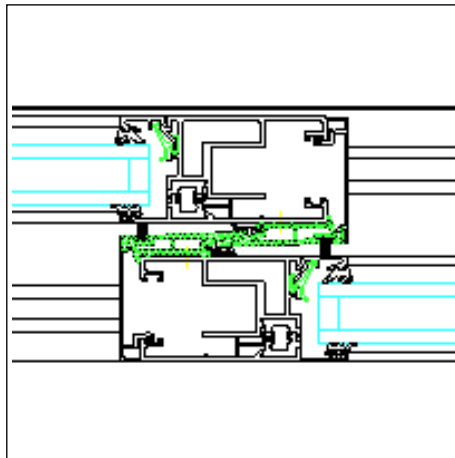
Drawing dwg (dwg/271 KB)



Side section detail (3) with vent on inside

Drawing dxf (dxf/554 KB)

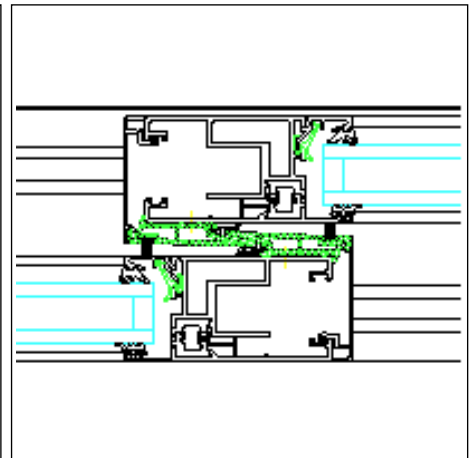
Drawing dwg (dwg/267 KB)



Interlock section detail (4) Vent / vent

Drawing dxf (dxf/614 KB)

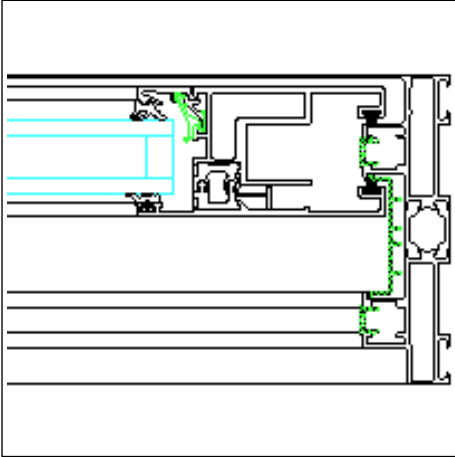
Drawing dwg (dwg/284 KB)



Interlock section detail (4) Fixed field (vent) / vent

Drawing dxf (dxf/587 KB)

Drawing dwg (dwg/276 KB)



**Side section detail (3) with vent on
inside**

Drawing dxf (dxf/553 KB)

Drawing dwg (dwg/267 KB)