

## Schüco FW 50+: Dikey cepheler ve ışıklıklar için sistem çözümleri

Denenmiş ve test edilmiş ısı yalıtımlı düşey profil / yatay profil sistemleri Schüco FW 50<sup>+</sup> ve FW 60<sup>+</sup> özellikle geniş modül genişliği ve kurulum yüksekliği ve içeri veya dışarı doğru tıraşlı olma özellikleri ile etkileyici dikey cepheler ve ışıklıklar yaratmada kullanılabilir. Çatı tipleri: sabit genişlikte çatılardan geniş kapsamlı kemerli tepelere kadar alışveriş merkezleri veya idari binalar gibi büyük çaplı projelere yönelik olarak Buna ek olarak .Hl yüksek yalıtımlı sistemler ENEC ve L Belgesi gibi geçerli enerji tasarrufu düzenlemeleri ile uyumludur.



- 50 veya 60 mm'lik dar profil alın genişlikleri
- Geniş modül genişlikleri ve kurulum yükseklikleri 6 kN'e kadar olan cam yükleri ile kullanılabilir
- Geniş yelpazede kapak profilleri çeşitli cephe tarzları için mükemmel tasarım seçenekleri sunar, örneğin görünür vida monteli kapaklar, düz kapak profilleri veya çelik görünümlü kapak profilleri
- FW 50<sup>+</sup> / FW 60<sup>+</sup> her 2 yüz üzerinde pozisyonunda tutularak yatay veya dikey bir vurgu ile oluşturulabilir
- Kurşuna dayanıklılık, hırsızlıktan koruma ve patlamaya karşı koruma seçenekleri
- Ayrıca yangına dayanıklı bir cephe (BF) olarak da kullanılabilir
- Yıldırım kondüktör cihazının cephe sistemi ile gizli bir şekilde bütünleştirilmesi
- Işıklıklar tüm Schüco Royal S çatı kanatları ile birlikte kullanılabilir
- Yüksek düzeyde ön üretim sayesinde hızlı ve kolay kurulum

## Schüco FW 50<sup>+</sup> CW: Havalandırmalı / havalandırmalı olmayan cepheler

Havalandırmalı / havalandırmalı olmayan cephelere yönelik Schüco sistemleri FW 50<sup>+</sup> CW ve FW 60<sup>+</sup> CW her tür düzgün alınlı paneli barındırabilir ve tüm gerekli bağlantı donanımları ve alt yapı donanımları ile tedarik edilebilir. Diğer bir avantajı da cephe üretimi ve binanın iç mekanının aynı anda yapılabilmesinden dolayı inşaat süresinde önemli bir azalmanın sağlanmasıdır.

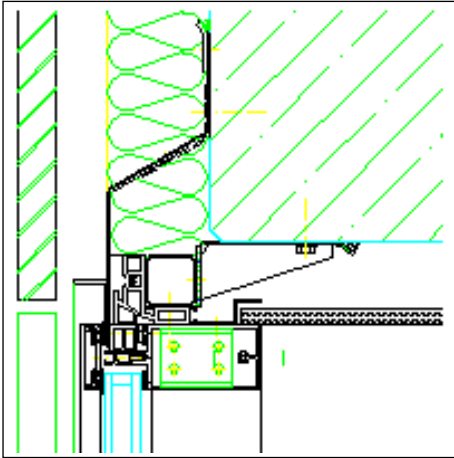
- Kompozit konstrüksiyonlar sayesinde çok ekonomik çözümler
- Havalandırmalı ve havalandırmalı olmayan alanlara yerleştirmede büyük esneklik

## Tech. Information

<b>Material</b>	
Aluminium	
<b>Type of construction</b>	
Thermally insulated	
<b>Security</b>	
Burglar resistance DIN V ENV 1627 to 1630	WK 1 WK 2
Bullet resistance DIN EN 1522	FB 4
<b>Façades</b>	
Curtain walling	
Non-ventilated façades (mullion/transom)	
Ventilated/non-ventilated façades	
Ribbon window façade	
<b>Skylights</b>	
<b>Conservatories</b>	
<b>Internal statics</b>	
<b>Further tests</b>	
Air permeability DIN EN 12152	AE
Weathertightness DIN EN 12154	RE <sub>1000</sub>
Measurement of sound insulation DIN EN 20140	

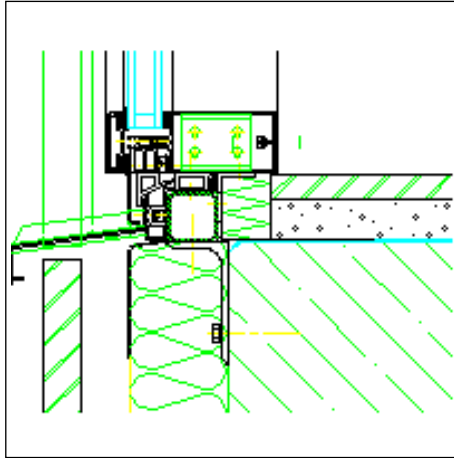
## CAD-Drawings

### Attachment to structure 4 Attachment to ventilated façade (natural stone)



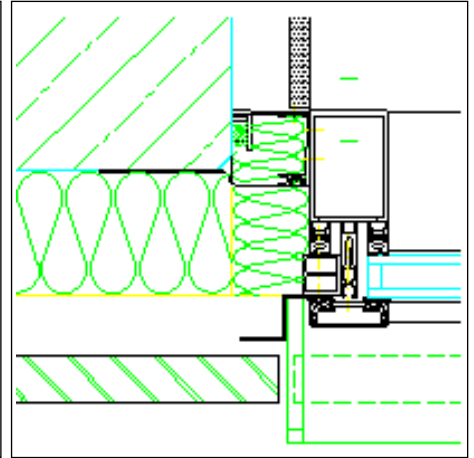
**Alternative attachment for ribbon windows top attachment**

Drawing dxf (dxf/223 KB)  
Drawing dwg (dwg/76 KB)



**Alternative attachment for ribbon windows sill attachment**

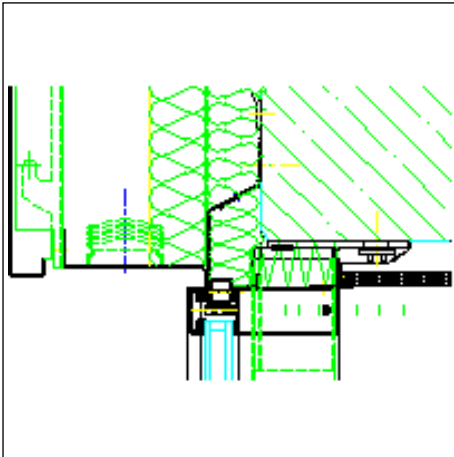
Drawing dxf (dxf/211 KB)  
Drawing dwg (dwg/72 KB)



**Alternative attachment for ribbon windows side wall attachment**

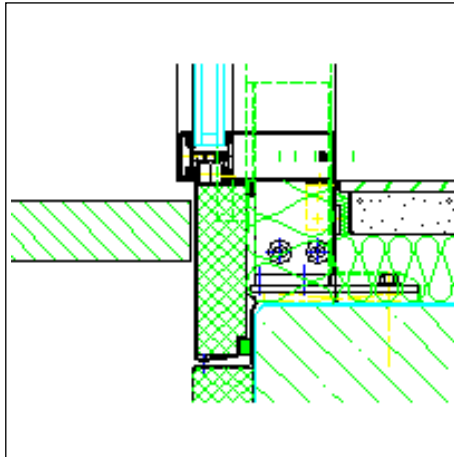
Drawing dxf (dxf/170 KB)  
Drawing dwg (dwg/66 KB)

### Attachment to structure 3 Attachment to ventilated façade (aluminium sheet)



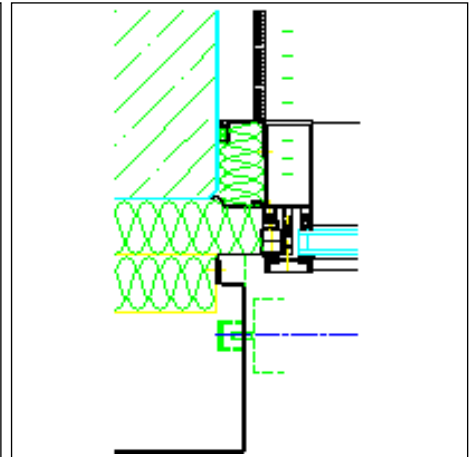
**Top attachment ceiling/head**

Drawing dxf (dxf/261 KB)  
Drawing dwg (dwg/79 KB)



**Sill attachment**

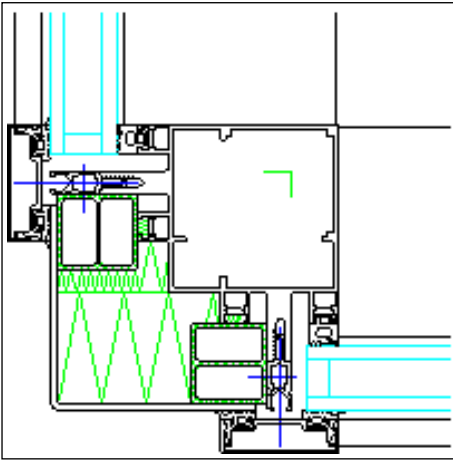
Drawing dxf (dxf/191 KB)  
Drawing dwg (dwg/65 KB)



**Side wall attachment**

Drawing dxf (dxf/196 KB)  
Drawing dwg (dwg/64 KB)

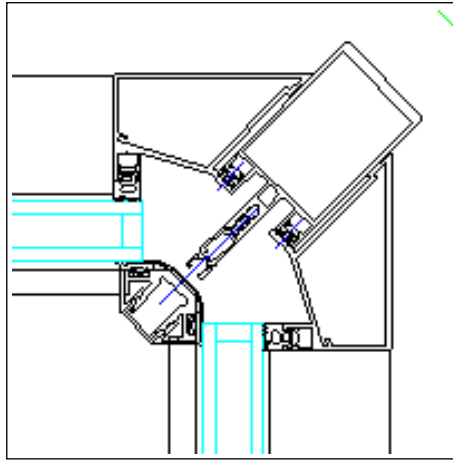
## FW50+, Corner section details



**90° corner mullion 85, 65mm basic depth**

Drawing dxf (dxf/182 KB)

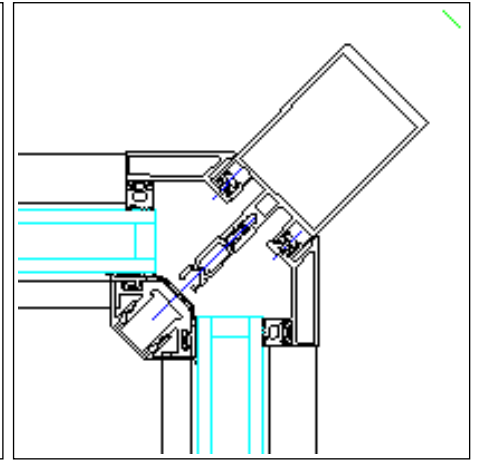
Drawing dwg (dwg/47 KB)



**90° mullion inner corner**

Drawing dxf (dxf/135 KB)

Drawing dwg (dwg/32 KB)

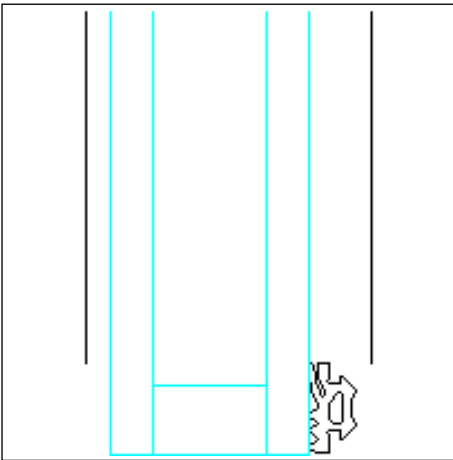


**90° mullion inner corner, alternative for 21mm transom**

Drawing dxf (dxf/129 KB)

Drawing dwg (dwg/31 KB)

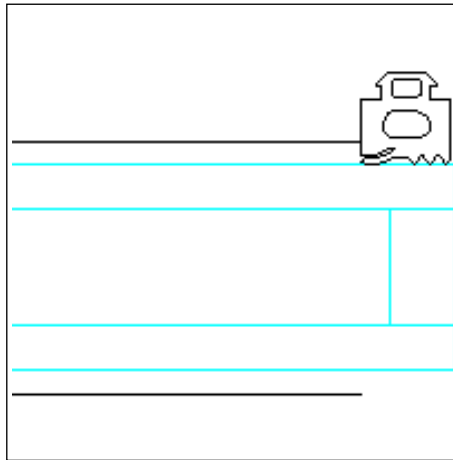
## Glass



**Transom section detail (vertical)**

Drawing dxf (dxf/25 KB)

Drawing dwg (dwg/8 KB)

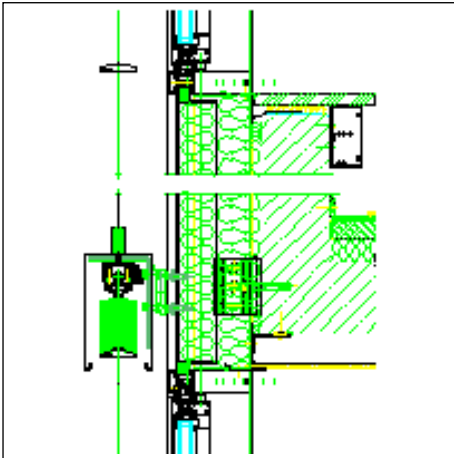


**Mullion section detail (horizontal)**

Drawing dxf (dxf/24 KB)

Drawing dwg (dwg/8 KB)

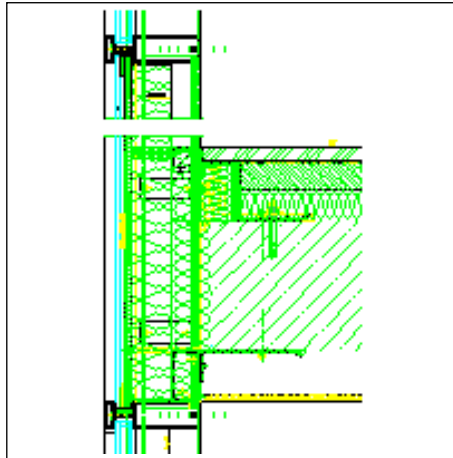
## Attachments to structure 2



**Alternative attachment Fixing to spandrel Sliding bearing point (2-field span)**

Drawing dxf (dxf/984 KB)

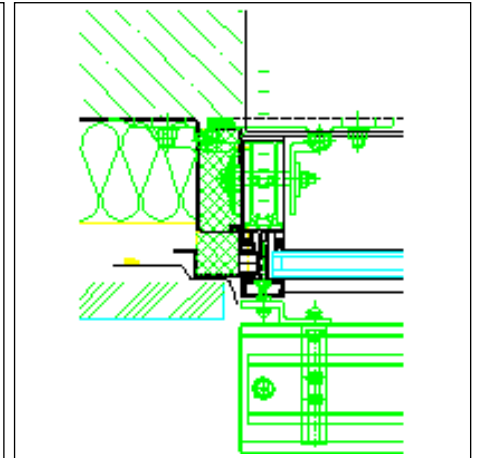
Drawing dwg (dwg/286 KB)



**Alternative attachment Fixing to intermediate floor, spandrel as W90 panel Fixed - sliding bearing point**

Drawing dxf (dxf/678 KB)

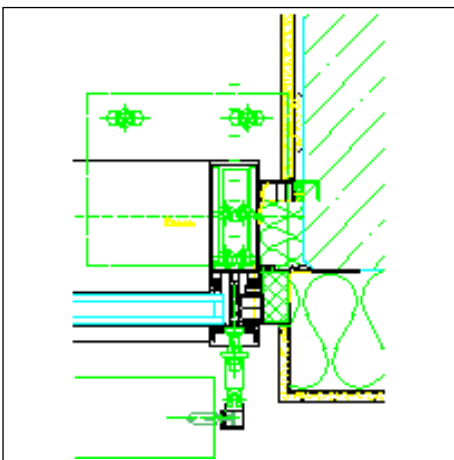
Drawing dwg (dwg/126 KB)



**Side wall attachment Ventilated natural stone façade**

Drawing dxf (dxf/448 KB)

Drawing dwg (dwg/144 KB)

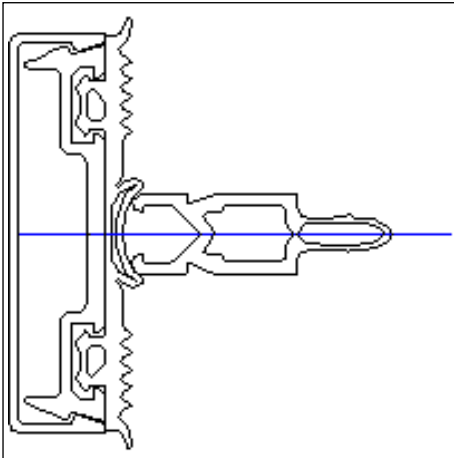


**Side wall attachment Outer wall with thermal insulation barrier**

Drawing dxf (dxf/428 KB)

Drawing dwg (dwg/97 KB)

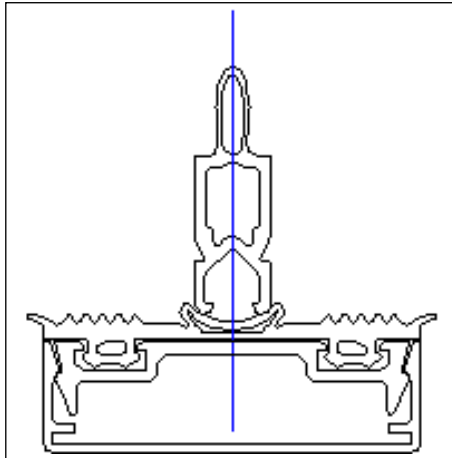
## Cover caps 5



**Alternative glazing with continuous gasket (transom)**

Drawing dxf (dxf/48 KB)

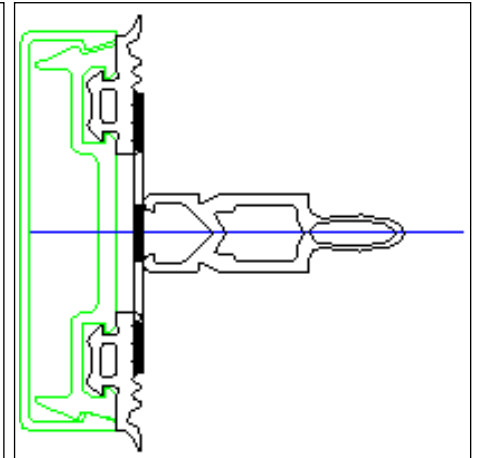
Drawing dwg (dwg/19 KB)



**Alternative glazing with continuous gasket (mullion)**

Drawing dxf (dxf/49 KB)

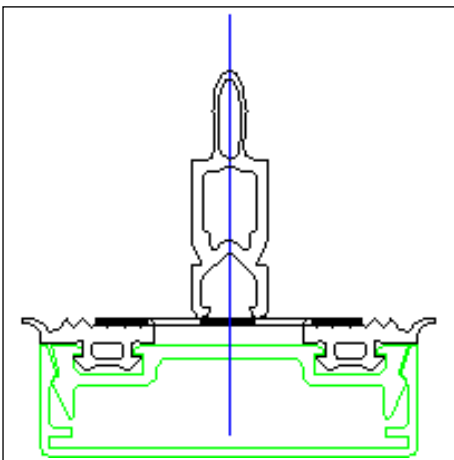
Drawing dwg (dwg/20 KB)



**Alternative glazing with gasket and butyl tape (transom)**

Drawing dxf (dxf/36 KB)

Drawing dwg (dwg/15 KB)

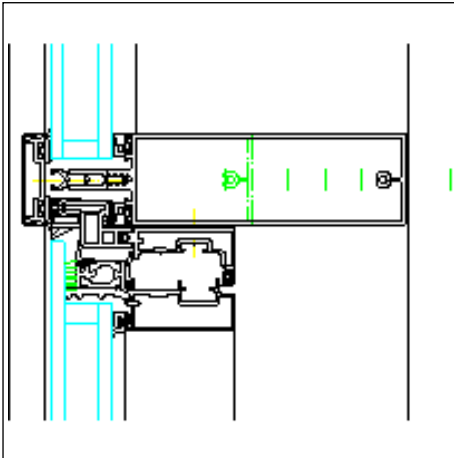


**Alternative glazing with gasket and butyl tape (mullion)**

Drawing dxf (dxf/37 KB)

Drawing dwg (dwg/15 KB)

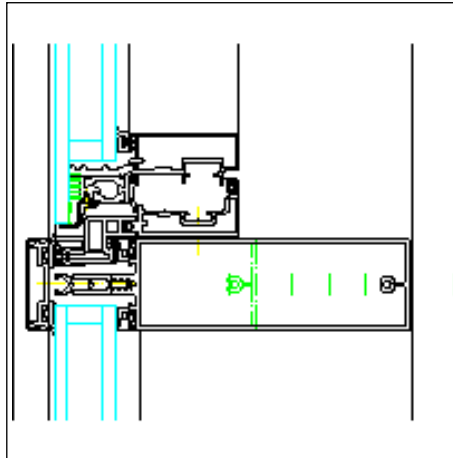
## Schüco AWS 102



**Mullion and transom sections Cover cap on 4 sides**

Drawing dxf (dxf/230 KB)

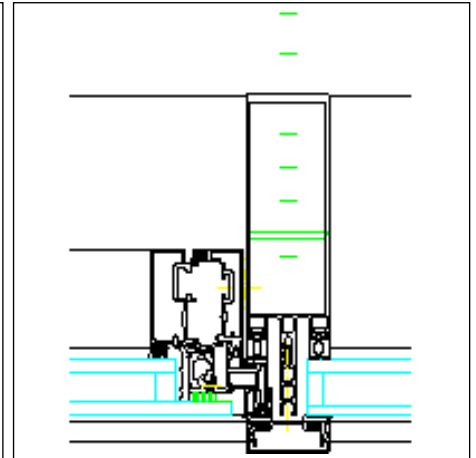
Drawing dwg (dwg/89 KB)



**Mullion and transom sections Cover cap on 4 sides**

Drawing dxf (dxf/248 KB)

Drawing dwg (dwg/95 KB)

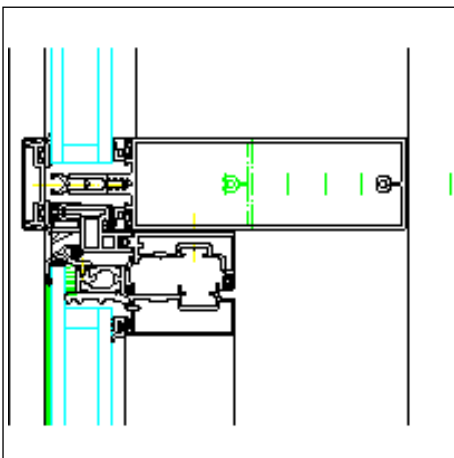


**Mullion and transom sections Cover cap on 4 sides**

Drawing dxf (dxf/236 KB)

Drawing dwg (dwg/92 KB)

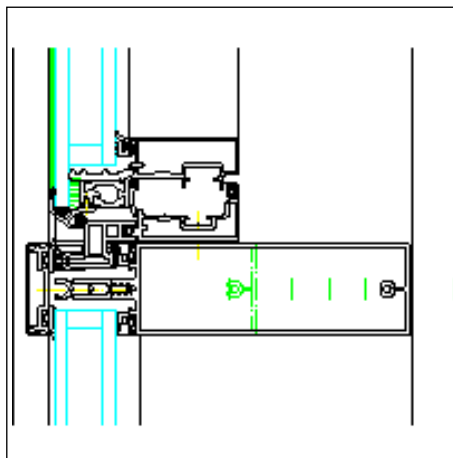
## Schüco AWS 102



**Mullion and transom sections Cover cap on 4 sides with retaining frame**

Drawing dxf (dxf/239 KB)

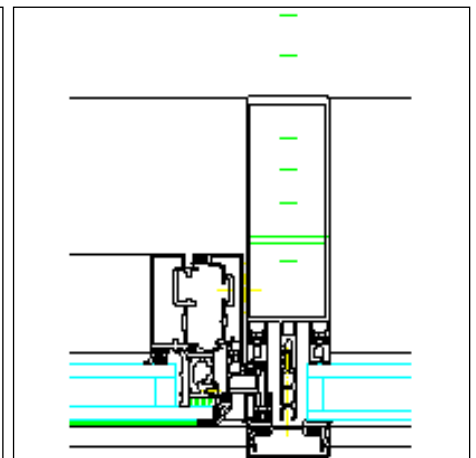
Drawing dwg (dwg/92 KB)



**Mullion and transom sections Cover cap on 4 sides with retaining frame**

Drawing dxf (dxf/240 KB)

Drawing dwg (dwg/93 KB)

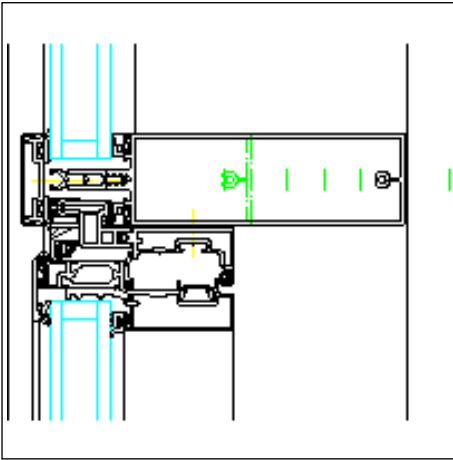


**Mullion and transom sections Cover cap on 4 sides with retaining frame**

Drawing dxf (dxf/242 KB)

Drawing dwg (dwg/93 KB)

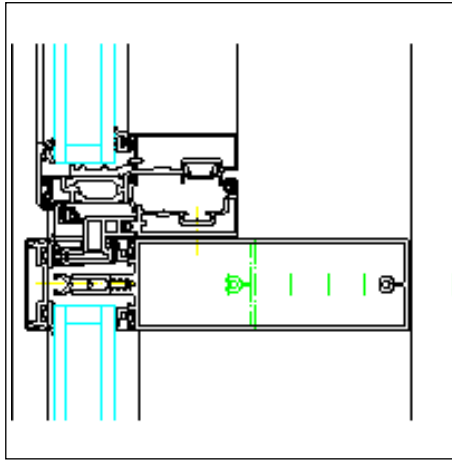
## Schüco AWS 102



**Mullion and transom sections Cover cap on 4 sides with glazing bead**

Drawing dxf (dxf/250 KB)

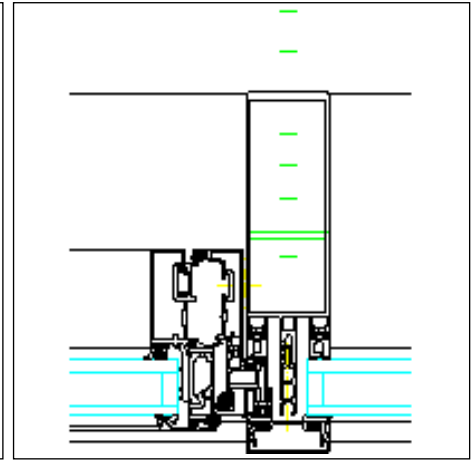
Drawing dwg (dwg/96 KB)



**Mullion and transom sections Cover cap on 4 sides with glazing bead**

Drawing dxf (dxf/250 KB)

Drawing dwg (dwg/96 KB)

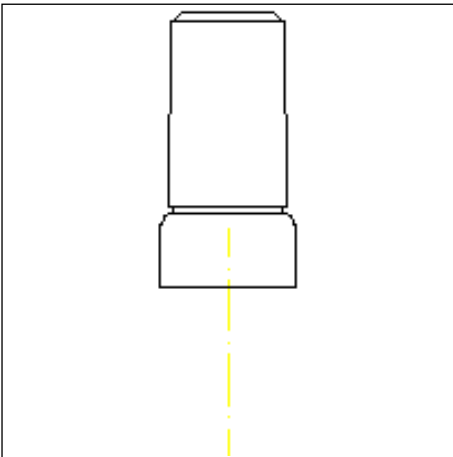


**Mullion and transom sections Cover cap on 4 sides with glazing bead**

Drawing dxf (dxf/252 KB)

Drawing dwg (dwg/97 KB)

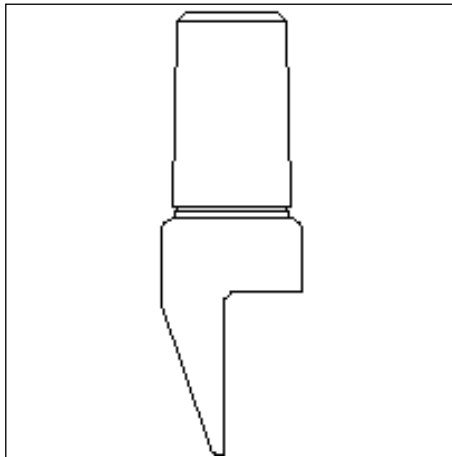
## Schüco AWS 102



**Handle projected top hung vent**

Drawing dxf (dxf/36 KB)

Drawing dwg (dwg/30 KB)



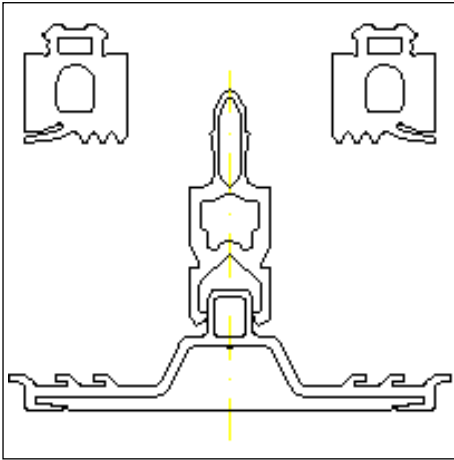
**Handle parallel opening window**

Drawing dxf (dxf/25 KB)

Drawing dwg (dwg/29 KB)



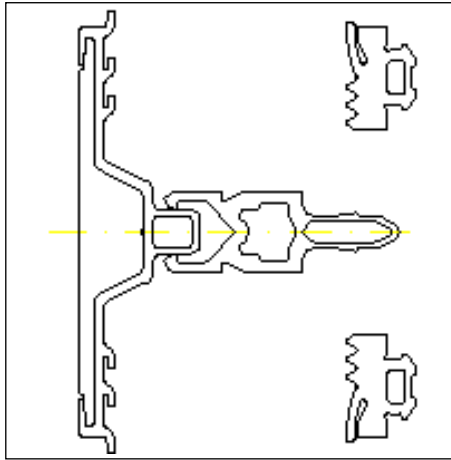
## Cover caps 6



### Alternative glazing (mullion) Flat pressure plate

Drawing dxf (dxf/84 KB)

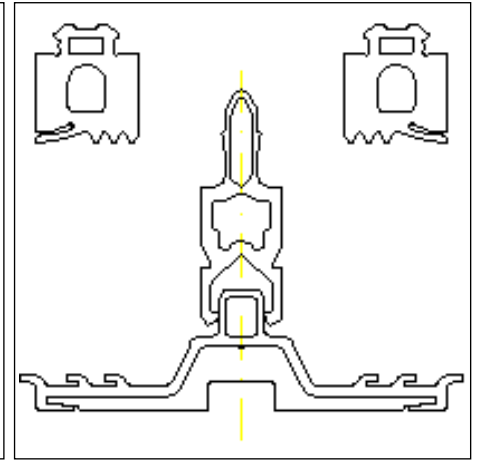
Drawing dwg (dwg/39 KB)



### Alternative glazing (transom) Flat pressure plate

Drawing dxf (dxf/80 KB)

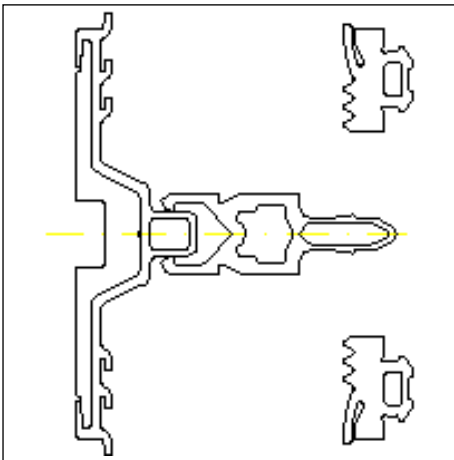
Drawing dwg (dwg/39 KB)



### Alternative glazing (mullion) Flat pressure plate with groove

Drawing dxf (dxf/87 KB)

Drawing dwg (dwg/40 KB)

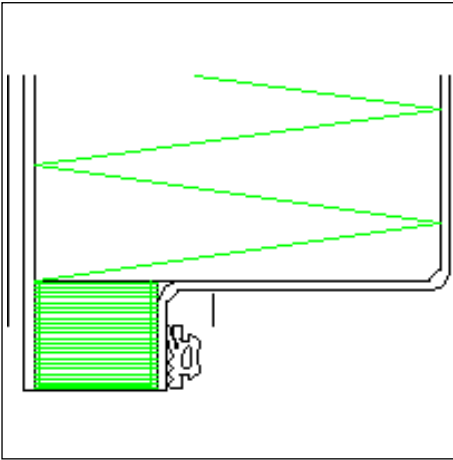


### Alternative glazing (transom) Flat pressure plate with groove

Drawing dxf (dxf/83 KB)

Drawing dwg (dwg/39 KB)

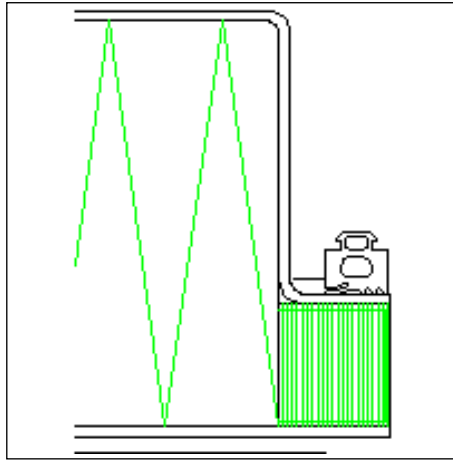
## Panel



**84 mm sheet metal panel transom  
section detail (vertical)**

Drawing dxf (dxf/29 KB)

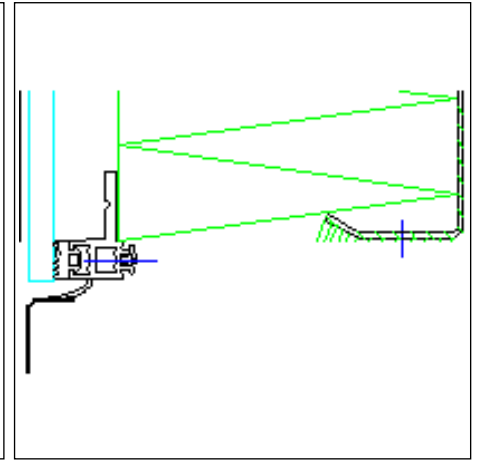
Drawing dwg (dwg/9 KB)



**84 mm sheet metal panel transom  
section detail (horizontal)**

Drawing dxf (dxf/30 KB)

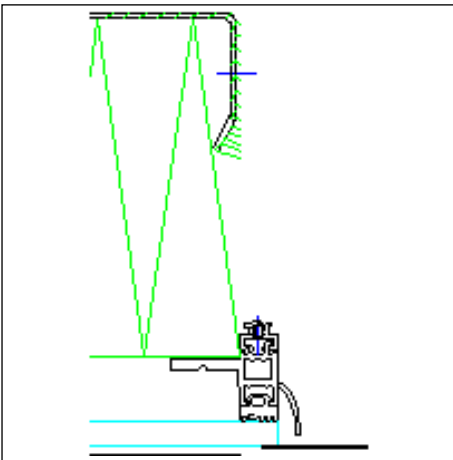
Drawing dwg (dwg/10 KB)



**Glazed unit Vertical section detail**

Drawing dxf (dxf/42 KB)

Drawing dwg (dwg/18 KB)

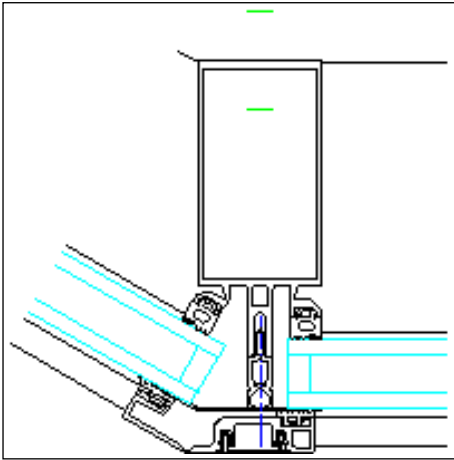


**Glazed unit Horizontal section detail**

Drawing dxf (dxf/47 KB)

Drawing dwg (dwg/21 KB)

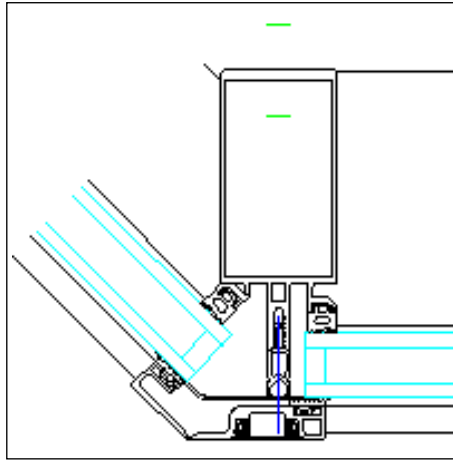
## Mullion/transom FW50+



**Mullion with variable angle on one side**  
**58-67ø**

Drawing dxf (dxf/118 KB)

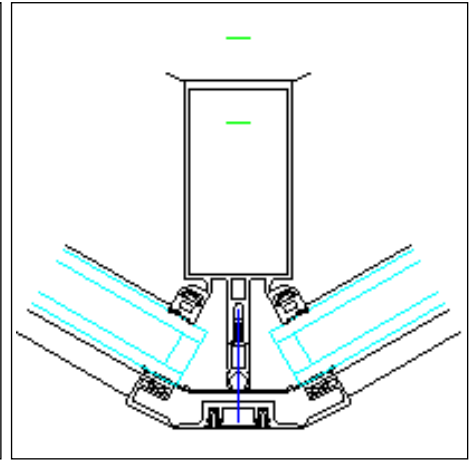
Drawing dwg (dwg/42 KB)



**Mullion with variable angle on one side**  
**45-57ø**

Drawing dxf (dxf/117 KB)

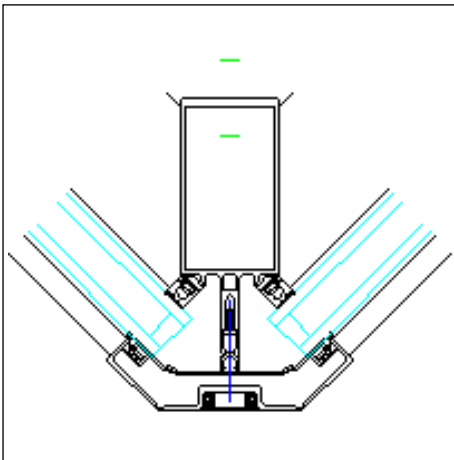
Drawing dwg (dwg/28 KB)



**Mullion with variable angle on both**  
**sides 60-65ø**

Drawing dxf (dxf/120 KB)

Drawing dwg (dwg/28 KB)

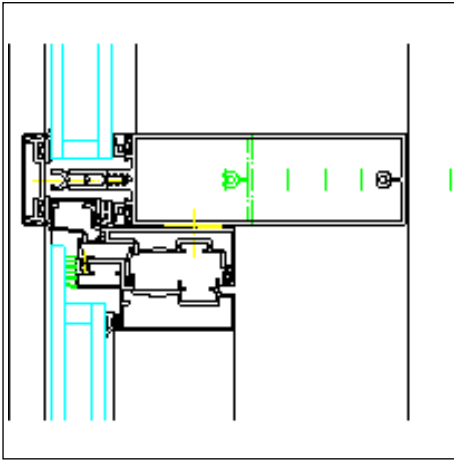


**Mullion with variable angle on both**  
**sides 45-50ø**

Drawing dxf (dxf/119 KB)

Drawing dwg (dwg/28 KB)

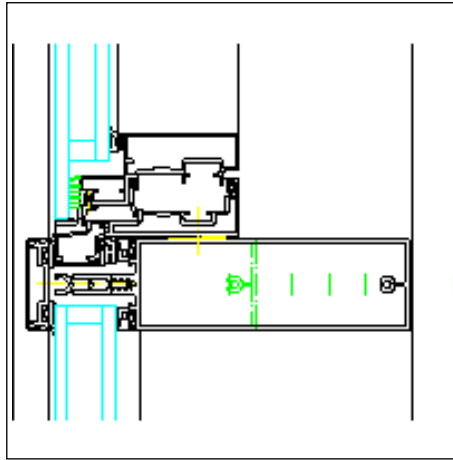
## Schüco AWS 102.NI



**Mullion and transom sections Cover cap on 4 sides**

Drawing dxf (dxf/204 KB)

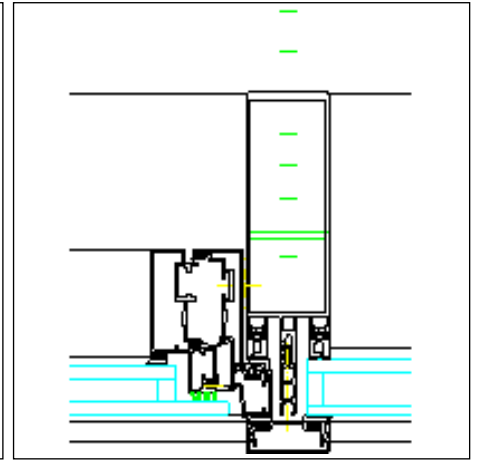
Drawing dwg (dwg/81 KB)



**Mullion and transom sections Cover cap on 4 sides**

Drawing dxf (dxf/209 KB)

Drawing dwg (dwg/83 KB)

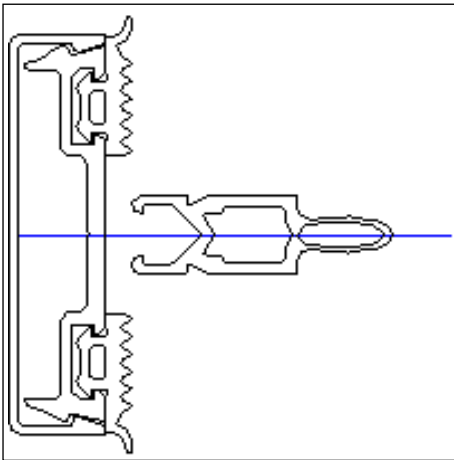


**Mullion and transom sections Cover cap on 4 sides**

Drawing dxf (dxf/207 KB)

Drawing dwg (dwg/83 KB)

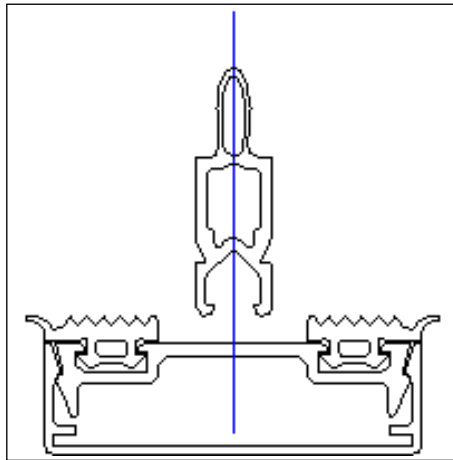
## Cover caps 2



**clip-on, with individual gasket 12 mm deep**

Drawing dxf (dxf/36 KB)

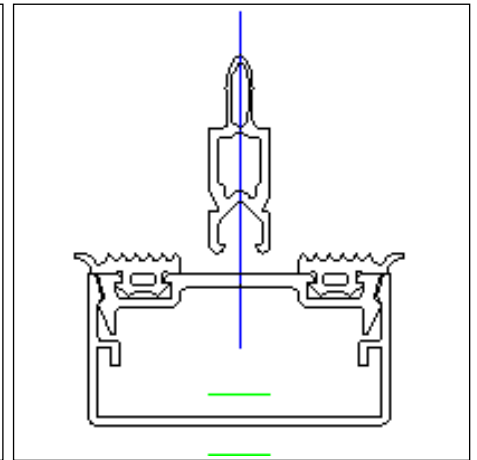
Drawing dwg (dwg/15 KB)



**clip-on, with individual gasket 15 mm deep**

Drawing dxf (dxf/37 KB)

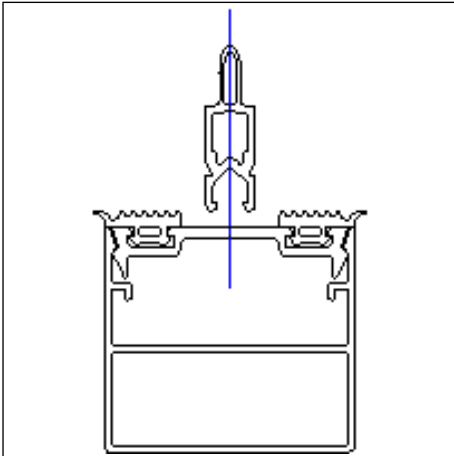
Drawing dwg (dwg/16 KB)



**clip-on, with individual gasket 20,25,30 mm deep**

Drawing dxf (dxf/37 KB)

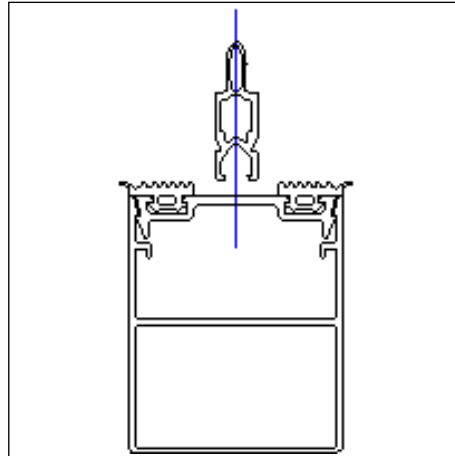
Drawing dwg (dwg/17 KB)



**clip-on, with individual gasket 45 mm deep**

Drawing dxf (dxf/39 KB)

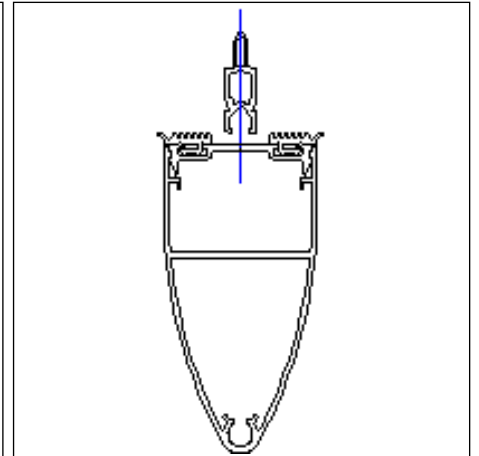
Drawing dwg (dwg/16 KB)



**clip-on, with individual gasket 60 mm deep**

Drawing dxf (dxf/39 KB)

Drawing dwg (dwg/16 KB)

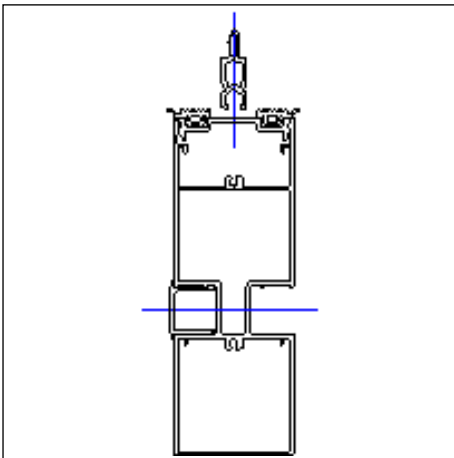


**clip-on, with individual gasket 100 mm deep**

Drawing dxf (dxf/53 KB)

Drawing dwg (dwg/20 KB)

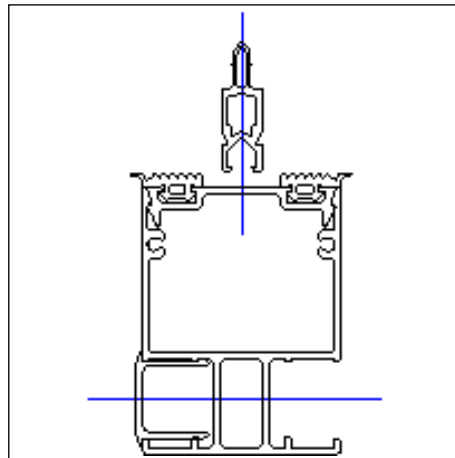
### Cover caps 3



**clip-on, with individual gasket 140 mm deep, for integrated F-shaped rail**

Drawing dxf (dxf/55 KB)

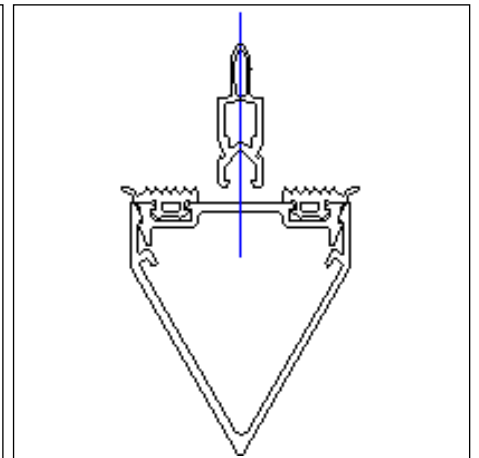
Drawing dwg (dwg/22 KB)



**clip-on, with individual gasket 66.5 mm deep, for integrated F-shaped rail**

Drawing dxf (dxf/50 KB)

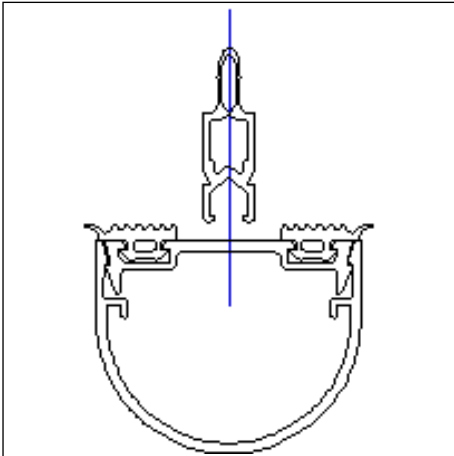
Drawing dwg (dwg/20 KB)



**clip-on, with individual gasket 58 mm deep**

Drawing dxf (dxf/39 KB)

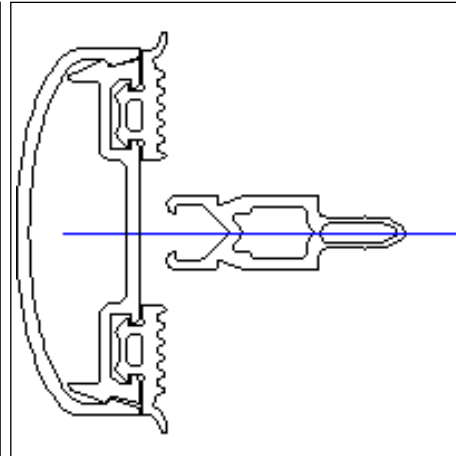
Drawing dwg (dwg/16 KB)



**clip-on, with individual gasket 40 mm deep**

Drawing dxf (dxf/54 KB)

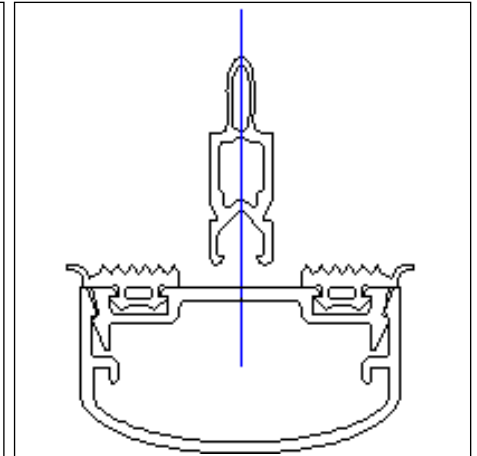
Drawing dwg (dwg/21 KB)



**clip-on, with individual gasket 17 mm deep**

Drawing dxf (dxf/50 KB)

Drawing dwg (dwg/21 KB)

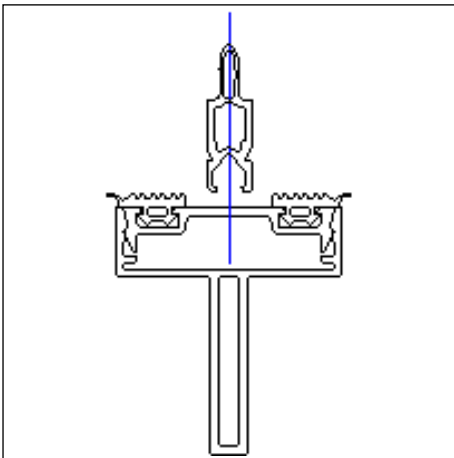


**clip-on, with individual gasket 26 mm deep**

Drawing dxf (dxf/52 KB)

Drawing dwg (dwg/22 KB)

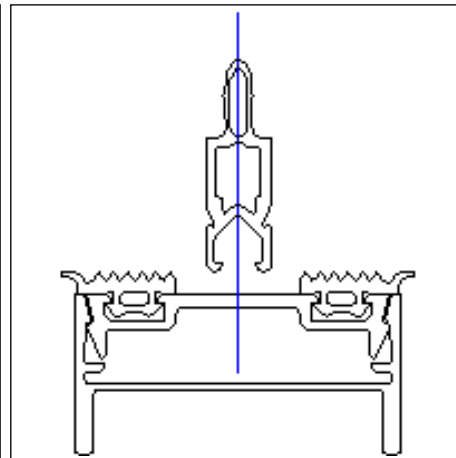
## Cover caps 4



**clip-on, with individual gasket 55 mm deep**

Drawing dxf (dxf/39 KB)

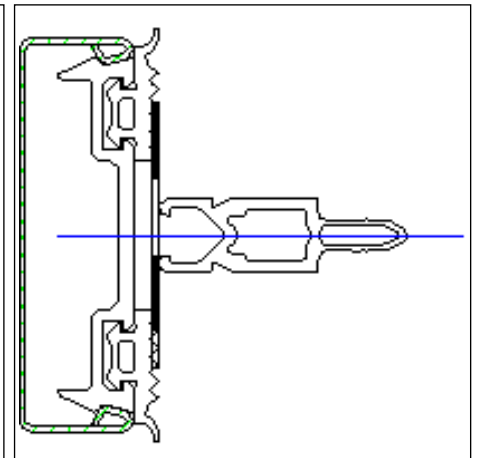
Drawing dwg (dwg/17 KB)



**clip-on, with individual gasket 25 mm deep**

Drawing dxf (dxf/57 KB)

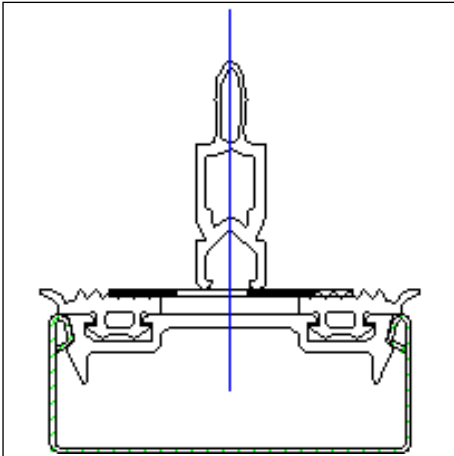
Drawing dwg (dwg/16 KB)



**Stainless steel, 15 mm deep with gasket and butyl tape**

Drawing dxf (dxf/53 KB)

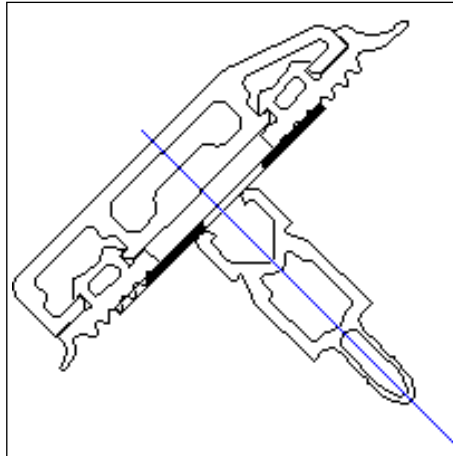
Drawing dwg (dwg/21 KB)



**Stainless steel, 20 mm deep with gasket and butyl tape**

Drawing dxf (dxf/53 KB)

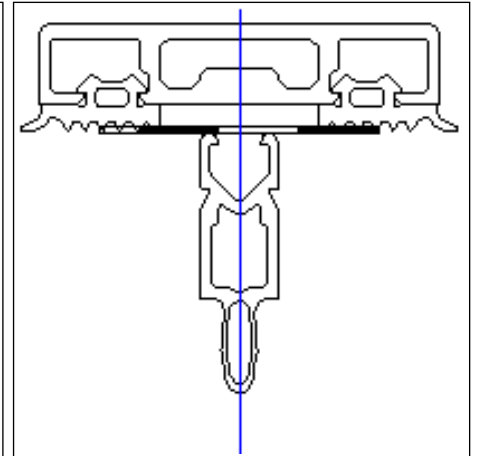
Drawing dwg (dwg/21 KB)



**screw-on, with gasket and butyl tape sloped glazing 6.5 mm deep**

Drawing dxf (dxf/43 KB)

Drawing dwg (dwg/17 KB)

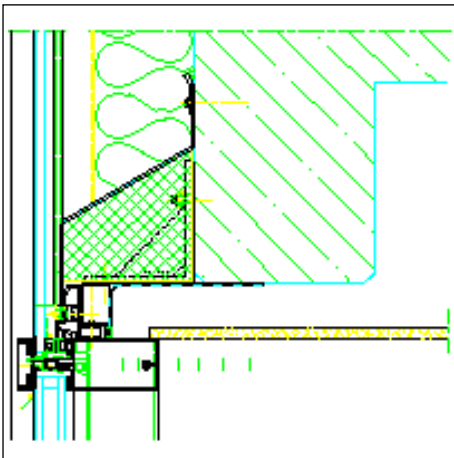


**screw-on, with gasket and butyl tape sloped glazing 8.5 mm deep**

Drawing dxf (dxf/33 KB)

Drawing dwg (dwg/14 KB)

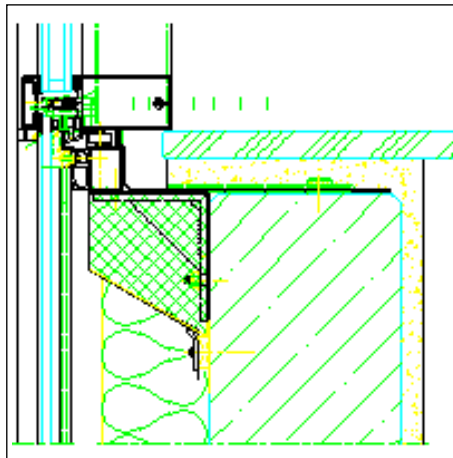
**Rear-ventilated façade, FW 50+**



**Top attachment**

Drawing dxf (dxf/229 KB)

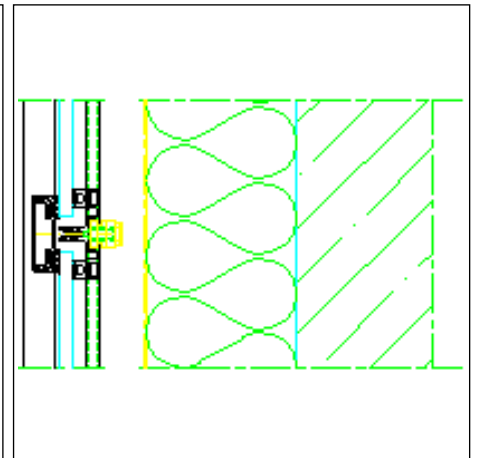
Drawing dwg (dwg/89 KB)



**Sill attachment**

Drawing dxf (dxf/262 KB)

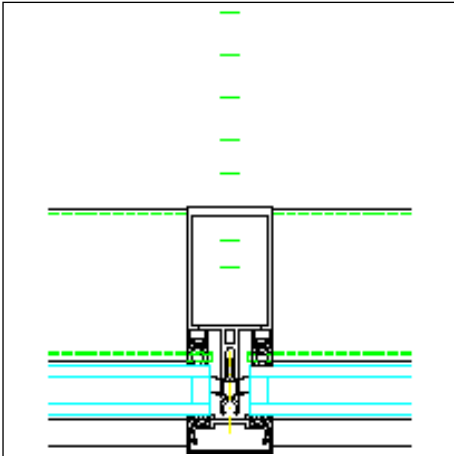
Drawing dwg (dwg/96 KB)



**Transom in ventilated area**

Drawing dxf (dxf/119 KB)

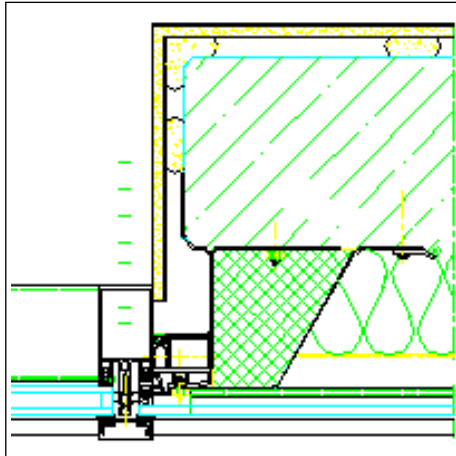
Drawing dwg (dwg/55 KB)



**Mullion with fixed light**

Drawing dxf (dxf/73 KB)

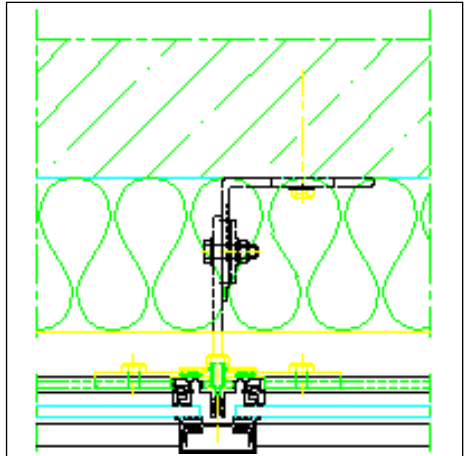
Drawing dwg (dwg/45 KB)



**Side wall attachment**

Drawing dxf (dxf/200 KB)

Drawing dwg (dwg/80 KB)

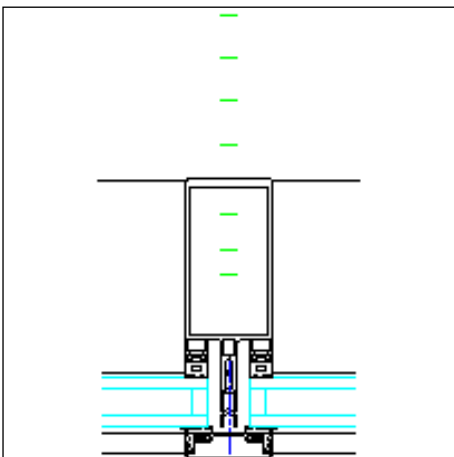


**Mullion in ventilated area**

Drawing dxf (dxf/204 KB)

Drawing dwg (dwg/86 KB)

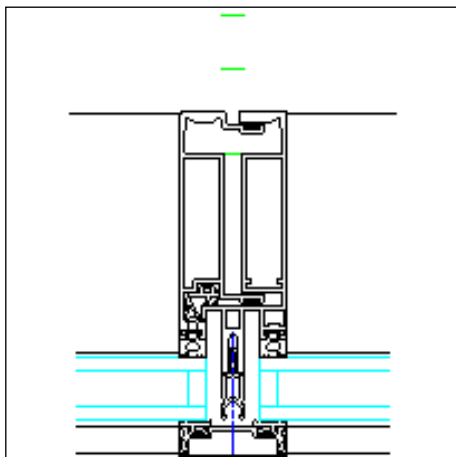
**Mullion/transom FW50+**



**Mullion**

Drawing dxf (dxf/94 KB)

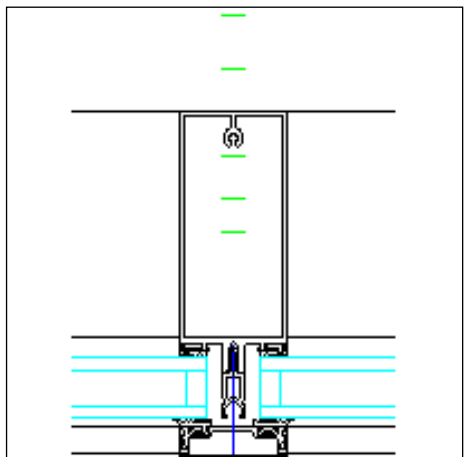
Drawing dwg (dwg/49 KB)



**Unit joint (vertical)**

Drawing dxf (dxf/136 KB)

Drawing dwg (dwg/63 KB)

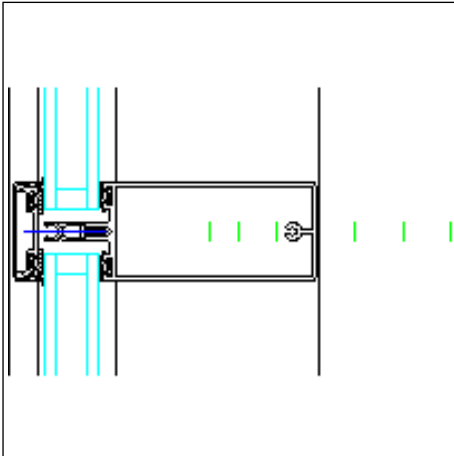


**Mullion from transom level 1 notched  
over transom level 2**

Drawing dxf (dxf/92 KB)

Drawing dwg (dwg/49 KB)

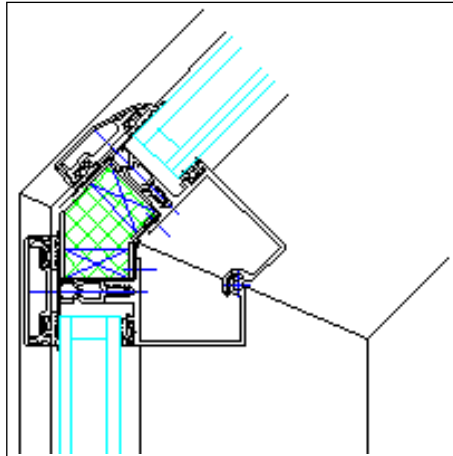




**Transom**

Drawing dxf (dxf/86 KB)

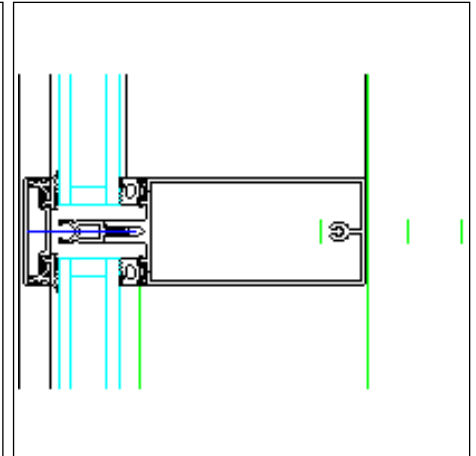
Drawing dwg (dwg/47 KB)



**Variable angle transom (30-80°)**

Drawing dxf (dxf/123 KB)

Drawing dwg (dwg/60 KB)

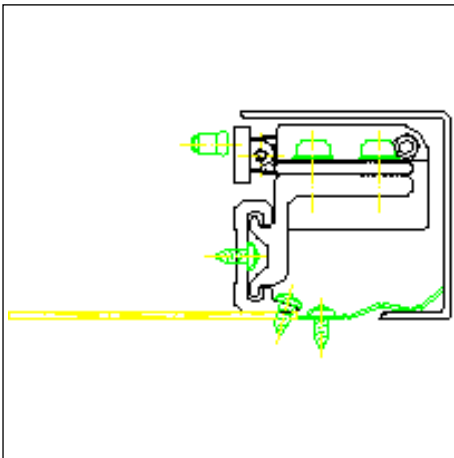


**Transom level 2 notched into mullion level 3**

Drawing dxf (dxf/88 KB)

Drawing dwg (dwg/48 KB)

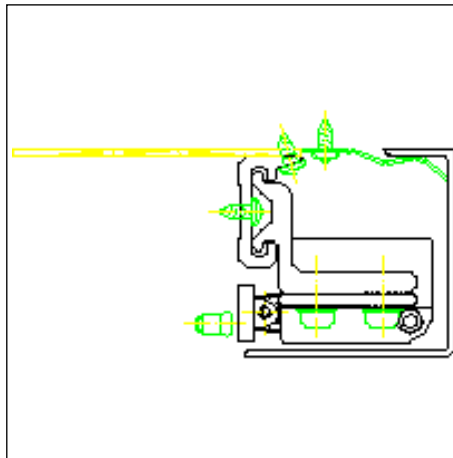
**Schüco AWS 102**



**Electric motor for projected top-hung window**

Drawing dxf (dxf/115 KB)

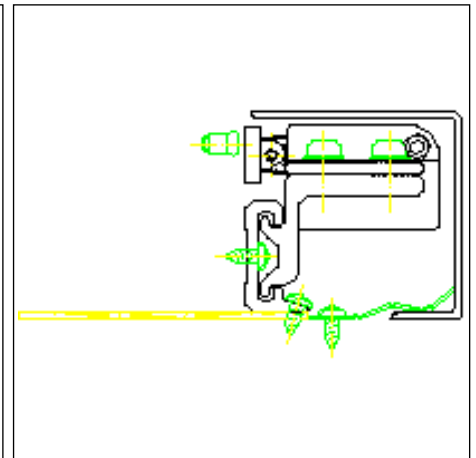
Drawing dwg (dwg/51 KB)



**Electric motor for parallel opening window**

Drawing dxf (dxf/115 KB)

Drawing dwg (dwg/51 KB)

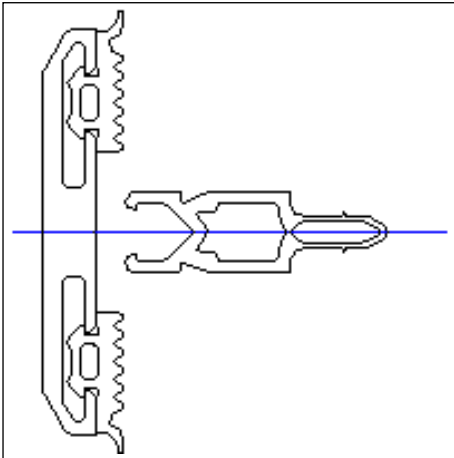


**Electric motor for parallel opening window**

Drawing dxf (dxf/115 KB)

Drawing dwg (dwg/51 KB)

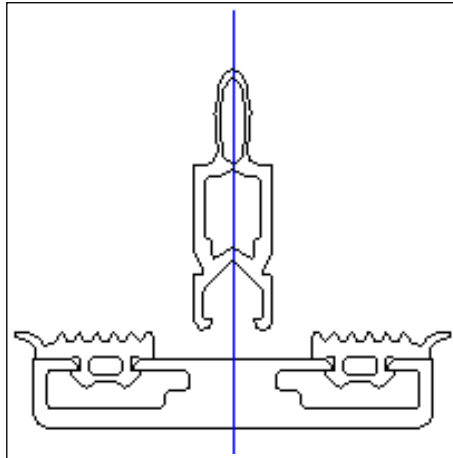
## Cover caps 1



**screw-on, with individual gasket 6.5 mm deep**

Drawing dxf (dxf/31 KB)

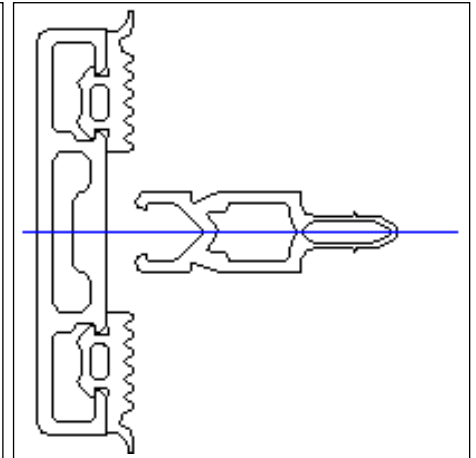
Drawing dwg (dwg/13 KB)



**screw-on, with individual gasket 8.5 mm deep**

Drawing dxf (dxf/31 KB)

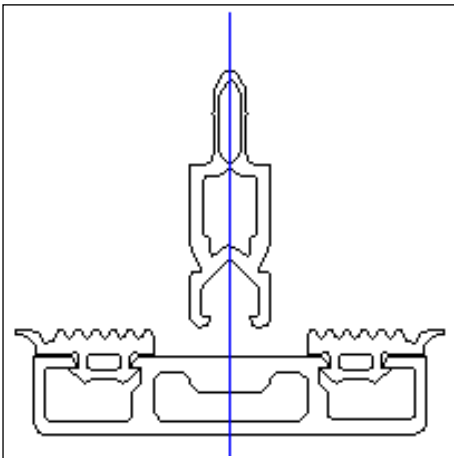
Drawing dwg (dwg/13 KB)



**screw-on, with individual gasket 8.5 mm deep**

Drawing dxf (dxf/32 KB)

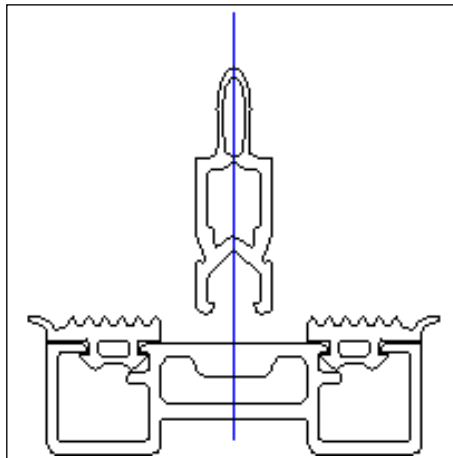
Drawing dwg (dwg/14 KB)



**screw-on, with individual gasket 10 mm deep**

Drawing dxf (dxf/32 KB)

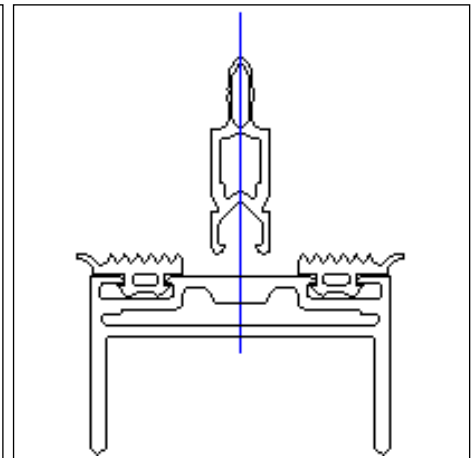
Drawing dwg (dwg/13 KB)



**screw-on, with individual gasket 15 mm deep**

Drawing dxf (dxf/34 KB)

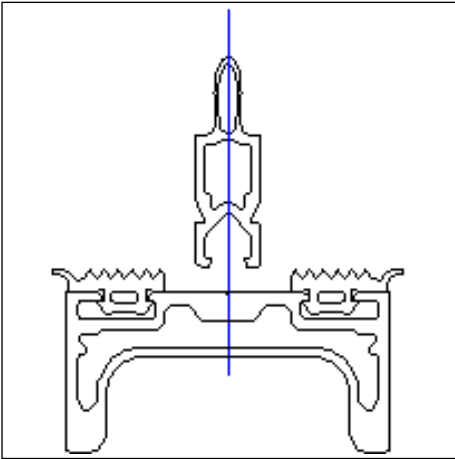
Drawing dwg (dwg/14 KB)



**screw-on, with U-shaped individual gasket 30 mm deep**

Drawing dxf (dxf/33 KB)

Drawing dwg (dwg/14 KB)

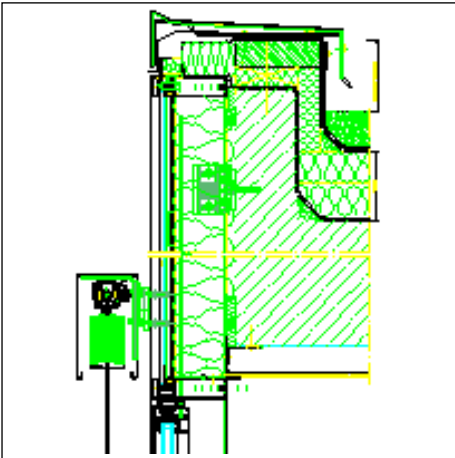


**screw-on, with U-shaped individual gasket 25 mm deep**

Drawing dxf (dxf/41 KB)

Drawing dwg (dwg/17 KB)

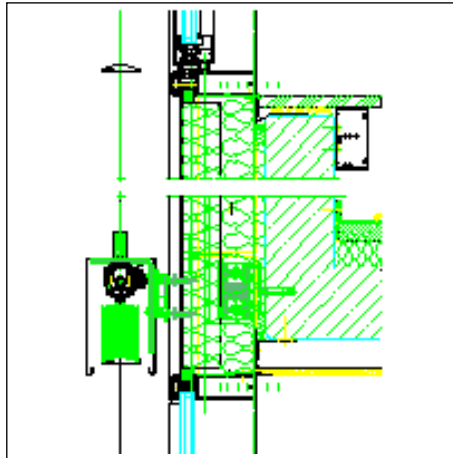
## Attachments to structure 1



**Top façade attachment, Fascia with toughened safety glass spandrel**

Drawing dxf (dxf/1.1 MB)

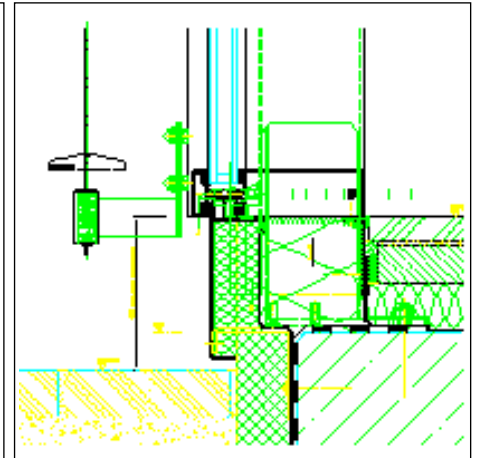
Drawing dwg (dwg/339 KB)



**Façade fixing bracket to spandrel, Fixed- sliding bearing point**

Drawing dxf (dxf/1,022 KB)

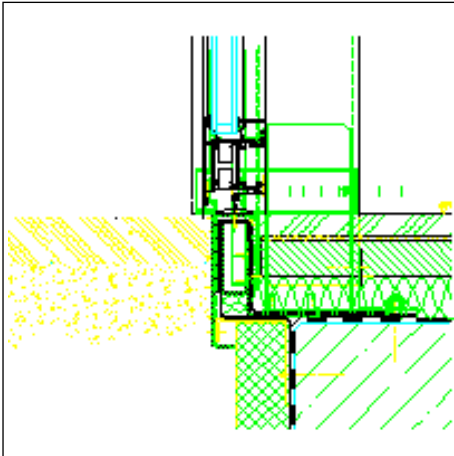
Drawing dwg (dwg/301 KB)



**Bottom façade attachment, Fixed light (sliding bearing point)**

Drawing dxf (dxf/340 KB)

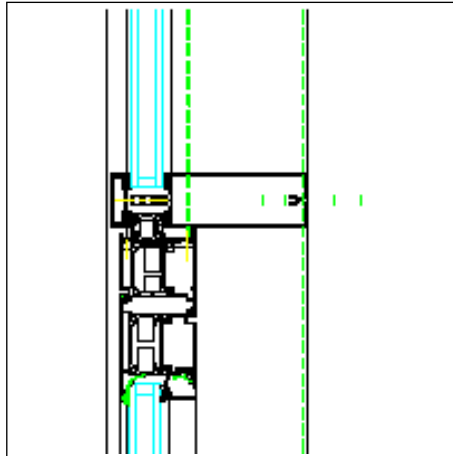
Drawing dwg (dwg/116 KB)



**Bottom façade attachment, Door unit**

Drawing dxf (dxf/414 KB)

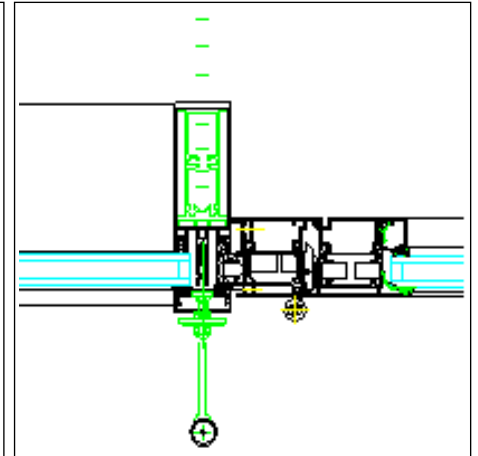
Drawing dwg (dwg/138 KB)



**Transom section detail with door unit**

Drawing dxf (dxf/370 KB)

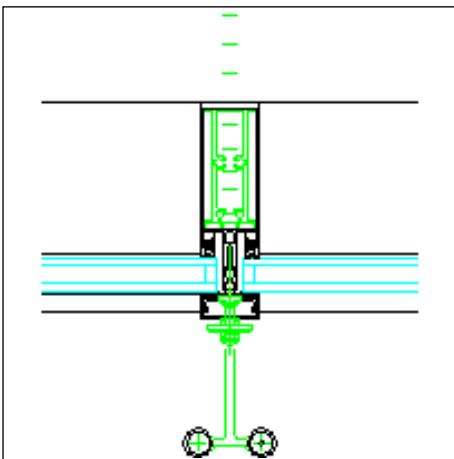
Drawing dwg (dwg/130 KB)



**Mullion section detail with door unit**

Drawing dxf (dxf/479 KB)

Drawing dwg (dwg/157 KB)



**Mullion section detail, fixed light**

Drawing dxf (dxf/143 KB)

Drawing dwg (dwg/59 KB)